



Microsoft®
System Center
Operations Manager

Instalación

SCOM 2012 (RC)



ITSanchez.com.ar

Compartiendo Experiencia
Windows, Linux y mas...



SCOM 2012

- En muchos casos luego de tener nuestra infraestructura de virtualización funcionando sin problemas el próximo paso es el MONITOREO para esto utilizamos System Center Operations Manager 2012, en esta presentación realizaremos la instalación del producto.
- Requerimientos:
 - Windows 2008 R2, Servidor Miembro.
 - .NET Framework 4.0 (Instalado).
 - ISO SQL 2008 R2 Standard.
 - Cuenta en Dominio (servicio SQL)



ITSanchez.com.ar

Compartiendo Experiencia
Windows, Linux y mas...

Ingresamos al equipo donde se instalara SCOM

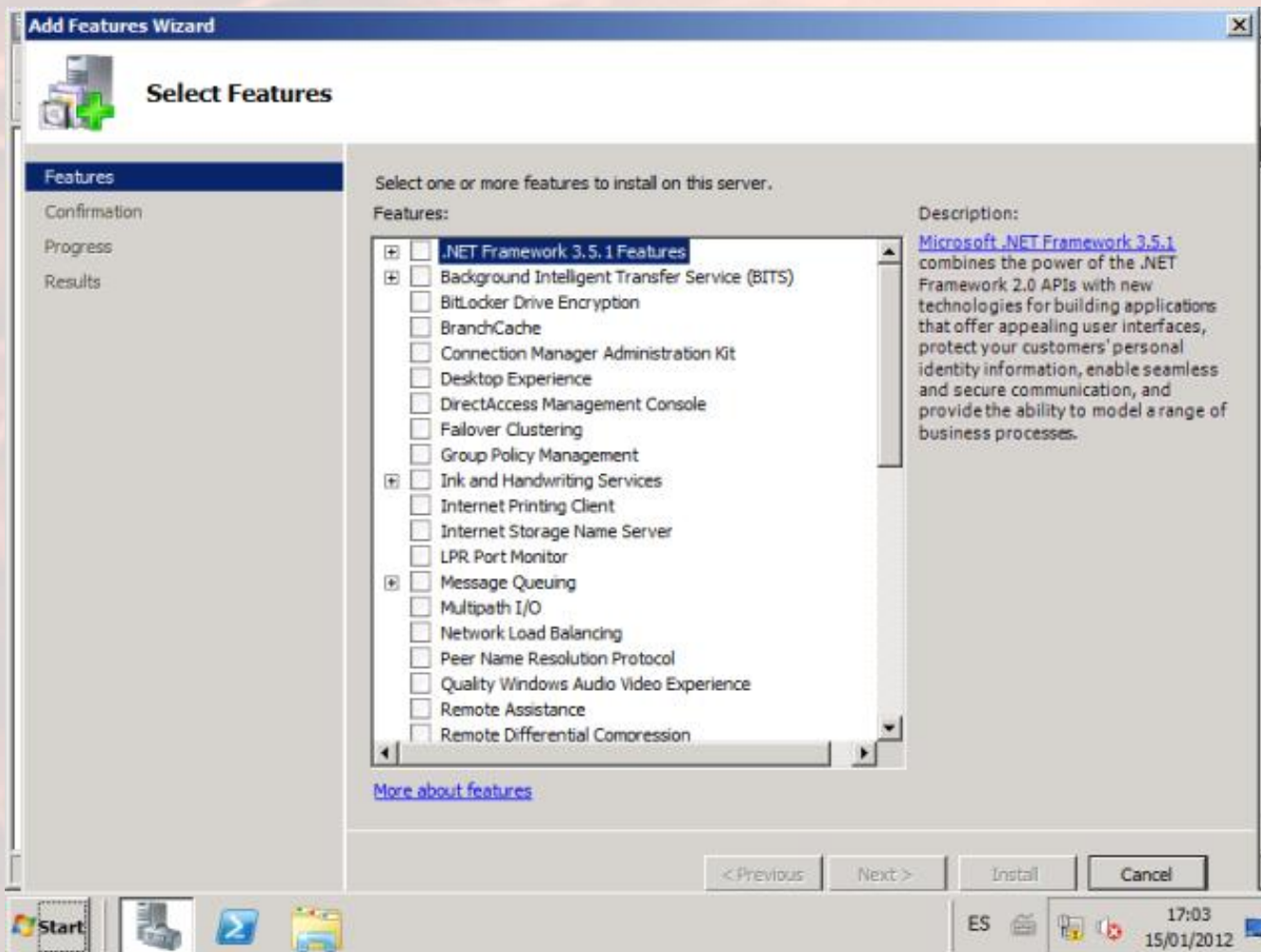




ITSanchez.com.ar

Compartiendo Experiencia
Windows, Linux y mas...

Desde Server Manager -> Features -> Add Features -> -NET Framework
3.5.1 Features





ITSanchez.com.ar

Compartiendo Experiencia
Windows, Linux y mas...

Seleccionar -> Add Required Role Services



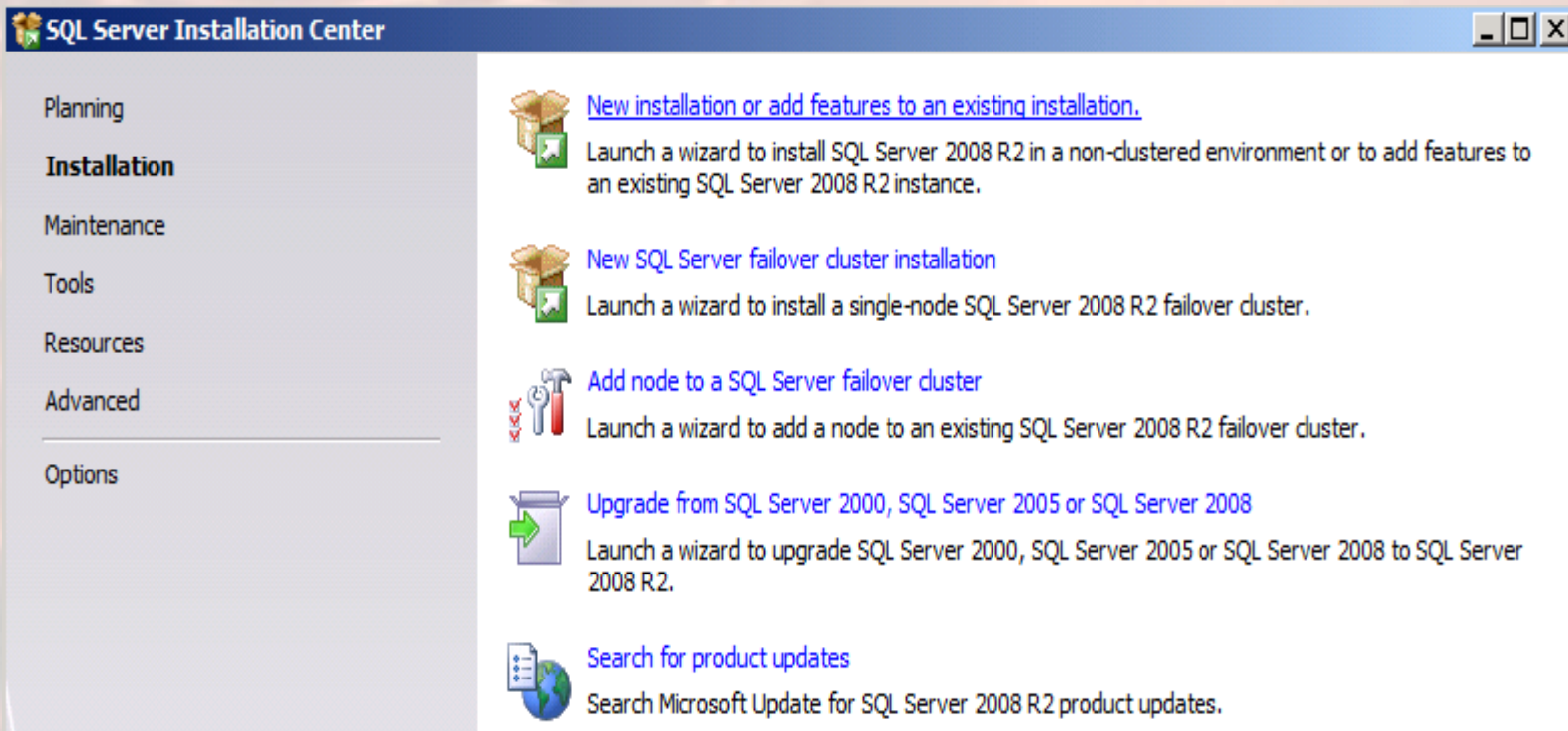
Aceptar todos los valores por defecto e instalar el servicio



ITSanchez.com.ar

Compartiendo Experiencia
Windows, Linux y mas...

Luego de agregar la Feature, comenzamos la instalación de SQL, seleccionamos **New instalaction or add features to an existing installation**

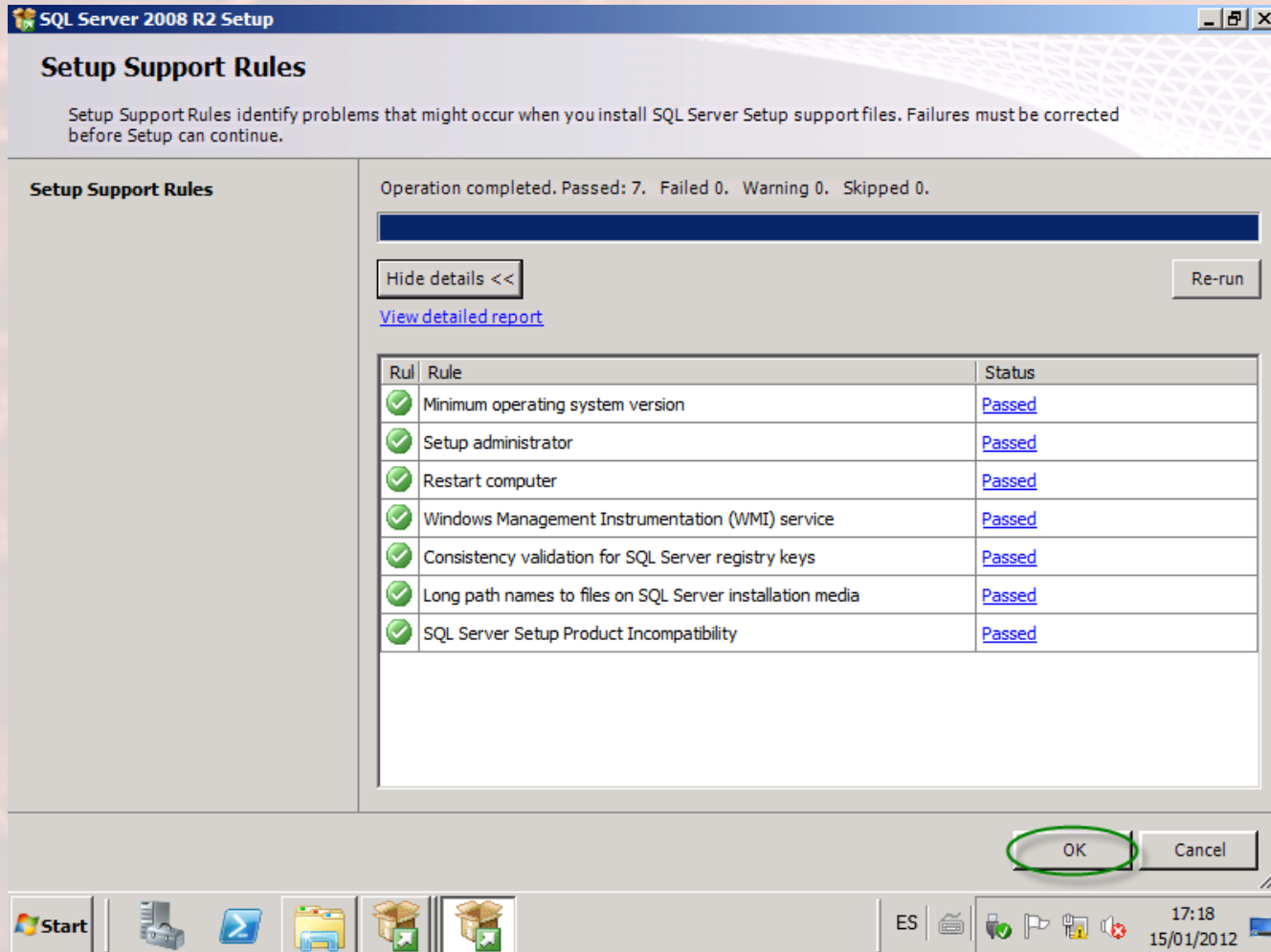




ITSanchez.com.ar

Compartiendo Experiencia
Windows, Linux y mas...

Seleccionamos → Ok





ITSanchez.com.ar

Compartiendo Experiencia
Windows, Linux y mas...

Confirmamos los datos de SQL -> Next

SQL Server 2008 R2 Setup

Product Key

Specify the edition of SQL Server 2008 R2 to install.

Product Key
License Terms
Setup Support Files

Validate this instance of SQL Server 2008 R2 by entering the 25-character key from the Microsoft certificate of authenticity or product packaging. You can also specify a free edition of SQL Server, such as Evaluation or Express. Evaluation has the largest set of SQL Server features, as documented in SQL Server Books Online, and is activated with a 180-day expiration. To upgrade from one edition to another, run the Edition Upgrade Wizard.

☐ Specify a free edition:
Evaluation

☒ Enter the product key:

< Back **Next >** Cancel

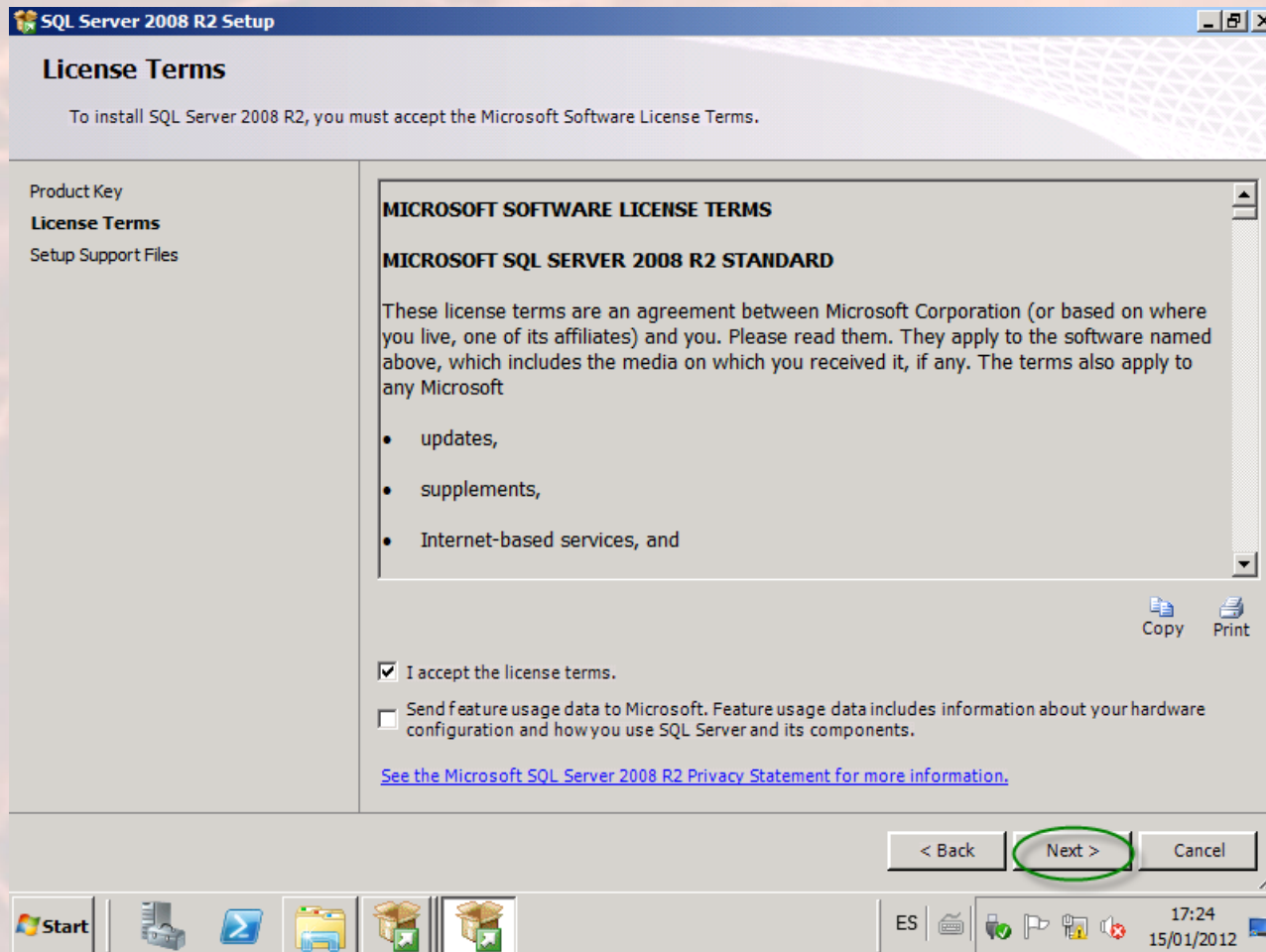
Start [Taskbar icons] ES [System tray icons] 17:20 15/01/2012



ITSanchez.com.ar

Compartiendo Experiencia
Windows, Linux y mas...

Aceptamos la licencia -> Next

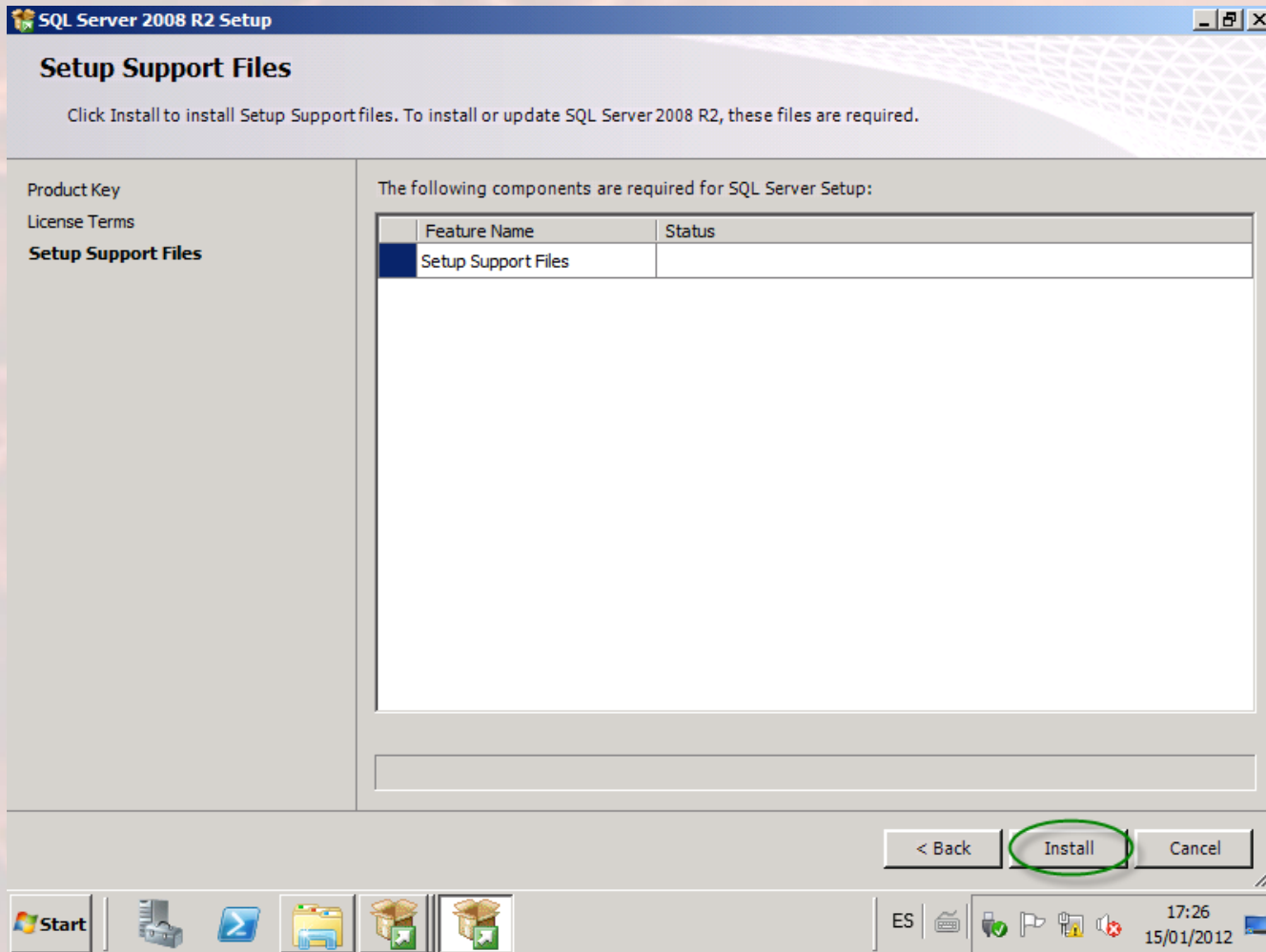




IT Sanchez.com.ar

Compartiendo Experiencia
Windows, Linux y mas...

Seleccionamos -> Install





ITSanchez.com.ar

Compartiendo Experiencia
Windows, Linux y mas...

Seleccionamos -> Next (ignoramos los warnings)

Setup Support Rules identify problems that might occur when you install SQL Server Setup support files. Failures must be corrected before setup can continue.

Setup Support Rules

Setup Role
Feature Selection
Installation Rules
Disk Space Requirements
Error Reporting
Installation Configuration Rules
Ready to Install
Installation Progress
Complete

Operation completed. Passed: 9. Failed 0. Warning 2. Skipped 0.

Hide details << Re-run

[View detailed report](#)

Rule	Status
Fusion Active Template Library (ATL)	Passed
Unsupported SQL Server products	Passed
Performance counter registry hive consistency	Passed
Previous releases of SQL Server 2008 Business Intelligence Develop...	Passed
Previous CTP installation	Passed
Consistency validation for SQL Server registry keys	Passed
Computer domain controller	Passed
Microsoft .NET Application Security	Warning
Edition WOW64 platform	Passed
Windows PowerShell	Passed
Windows Firewall	Warning

< Back **Next >** Cancel Help

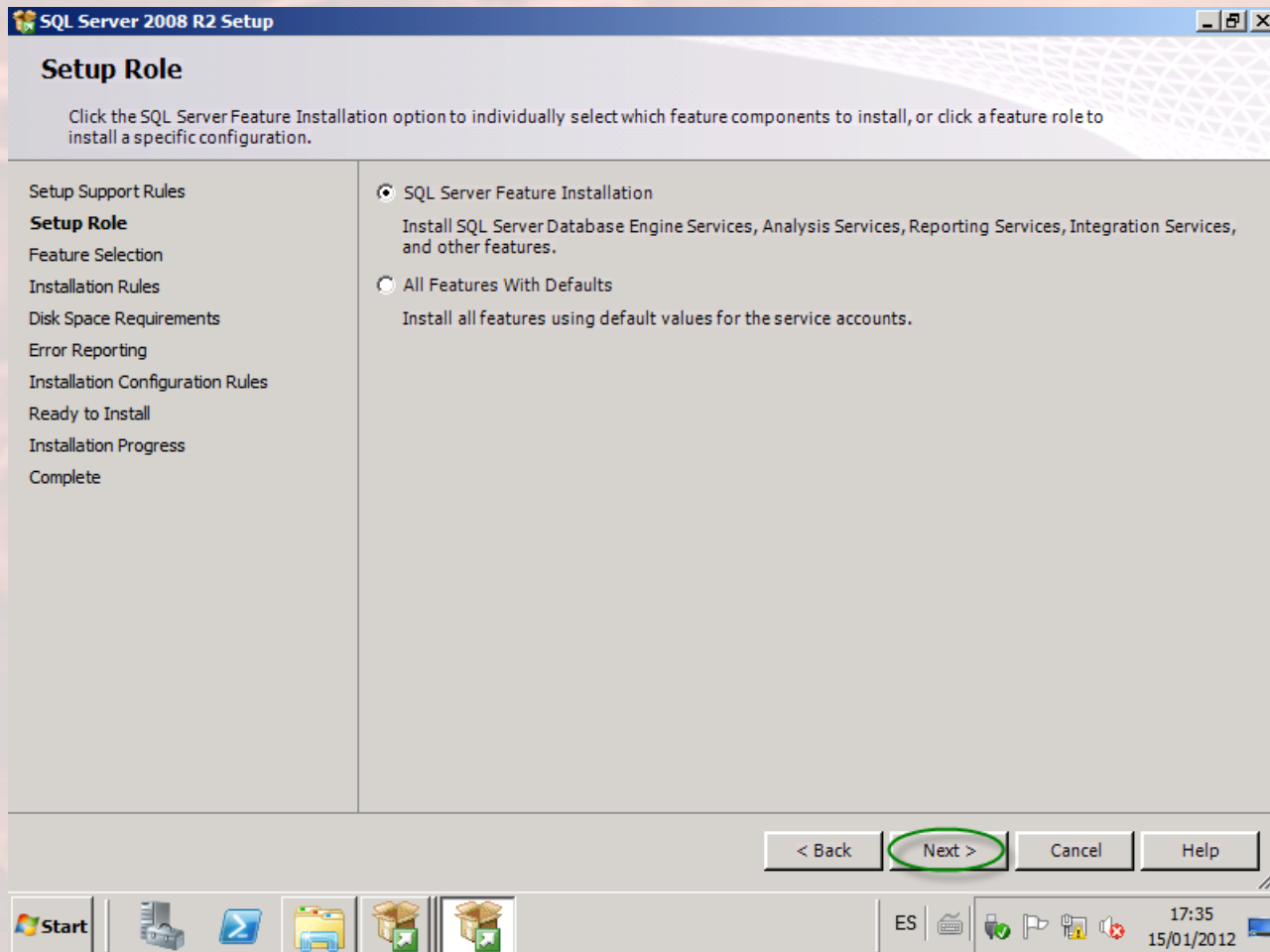
Start 17:32 15/01/2012



ITSanchez.com.ar

Compartiendo Experiencia
Windows, Linux y mas...

Seleccionamos -> Next





ITSanchez.com.ar

Compartiendo Experiencia
Windows, Linux y mas...

Seleccionamos las siguientes características -> Next

SQL Server 2008 R2 Setup

Feature Selection

Select the Standard features to install.

Features:	Description:
Instance Features <ul style="list-style-type: none"><input checked="" type="checkbox"/> Database Engine Services<ul style="list-style-type: none"><input type="checkbox"/> SQL Server Replication<input checked="" type="checkbox"/> Full-Text Search<input type="checkbox"/> Analysis Services<input checked="" type="checkbox"/> Reporting Services	Server features are instance-aware and have their own registry hives. They support multiple instances on a computer.
Shared Features <ul style="list-style-type: none"><input type="checkbox"/> Business Intelligence Development Studio<input type="checkbox"/> Client Tools Connectivity<input type="checkbox"/> Integration Services<input type="checkbox"/> Client Tools Backwards Compatibility<input type="checkbox"/> Client Tools SDK<input type="checkbox"/> SQL Server Books Online<input checked="" type="checkbox"/> Management Tools - Basic<ul style="list-style-type: none"><input checked="" type="checkbox"/> Management Tools - Complete<input type="checkbox"/> SQL Client Connectivity SDK<input type="checkbox"/> Microsoft Sync Framework	

Select All Unselect All

Shared feature directory: C:\Program Files\Microsoft SQL Server\ ...

Shared feature directory (x86): C:\Program Files (x86)\Microsoft SQL Server\ ...

< Back **Next >** Cancel Help

Start [Taskbar Icons] ES 17:37 15/01/2012



ITSanchez.com.ar

Compartiendo Experiencia
Windows, Linux y mas...

Seleccionamos -> Next

SQL Server 2008 R2 Setup

Installation Rules

Setup is running rules to determine if the installation process will be blocked. For more information, click Help.

Setup Support Rules
Setup Role
Feature Selection
Installation Rules
Instance Configuration
Disk Space Requirements
Server Configuration
Database Engine Configuration
Reporting Services Configuration
Error Reporting
Installation Configuration Rules
Ready to Install
Installation Progress
Complete

Operation completed. Passed: 6. Failed 0. Warning 0. Skipped 18.

[Hide details <<](#) [View detailed report](#) [Re-run](#)

Rul	Rule	Status
✓	SQL Server 2005 Express tools	Passed
✓	Operating system supported for edition	Passed
✓	Previous releases of Microsoft Visual Studio 2008	Passed
✓	SharePoint .NET Framework Supported Check	Not applicable
✓	Operating system requirement for SQL Server PowerPivot for Share...	Not applicable
✓	User account requirement for Farm administrator	Not applicable
✓	Internet Information Services version	Not applicable
✓	64-bit processor	Not applicable
✓	Single instance requirement	Not applicable
✓	64-bit operating system	Not applicable
✓	SharePoint configuration and upgrade check for existing farm	Not applicable

< Back **Next >** Cancel Help

Start | [Taskbar icons] | ES | [System tray icons] | 17:39 15/01/2012



ITSanchez.com.ar

Compartiendo Experiencia
Windows, Linux y mas...

Configuramos nuestra instancia -> Next

SQL Server 2008 R2 Setup

Instance Configuration

Specify the name and instance ID for the instance of SQL Server. Instance ID becomes part of the installation path.

Setup Support Rules
Setup Role
Feature Selection
Installation Rules
Instance Configuration
Disk Space Requirements
Server Configuration
Database Engine Configuration
Reporting Services Configuration
Error Reporting
Installation Configuration Rules
Ready to Install
Installation Progress
Complete

☐ Default instance

☒ Named instance:

Instance ID:

Instance root directory: ...

SQL Server directory: D:\SCOM2012\MSSQL10_50.SC0M2012

Reporting Services directory: D:\SCOM2012\MSRS10_50.SC0M2012

Installed instances:

Instance Name	Instance ID	Features	Edition	Version
---------------	-------------	----------	---------	---------

< Back **Next >** Cancel Help

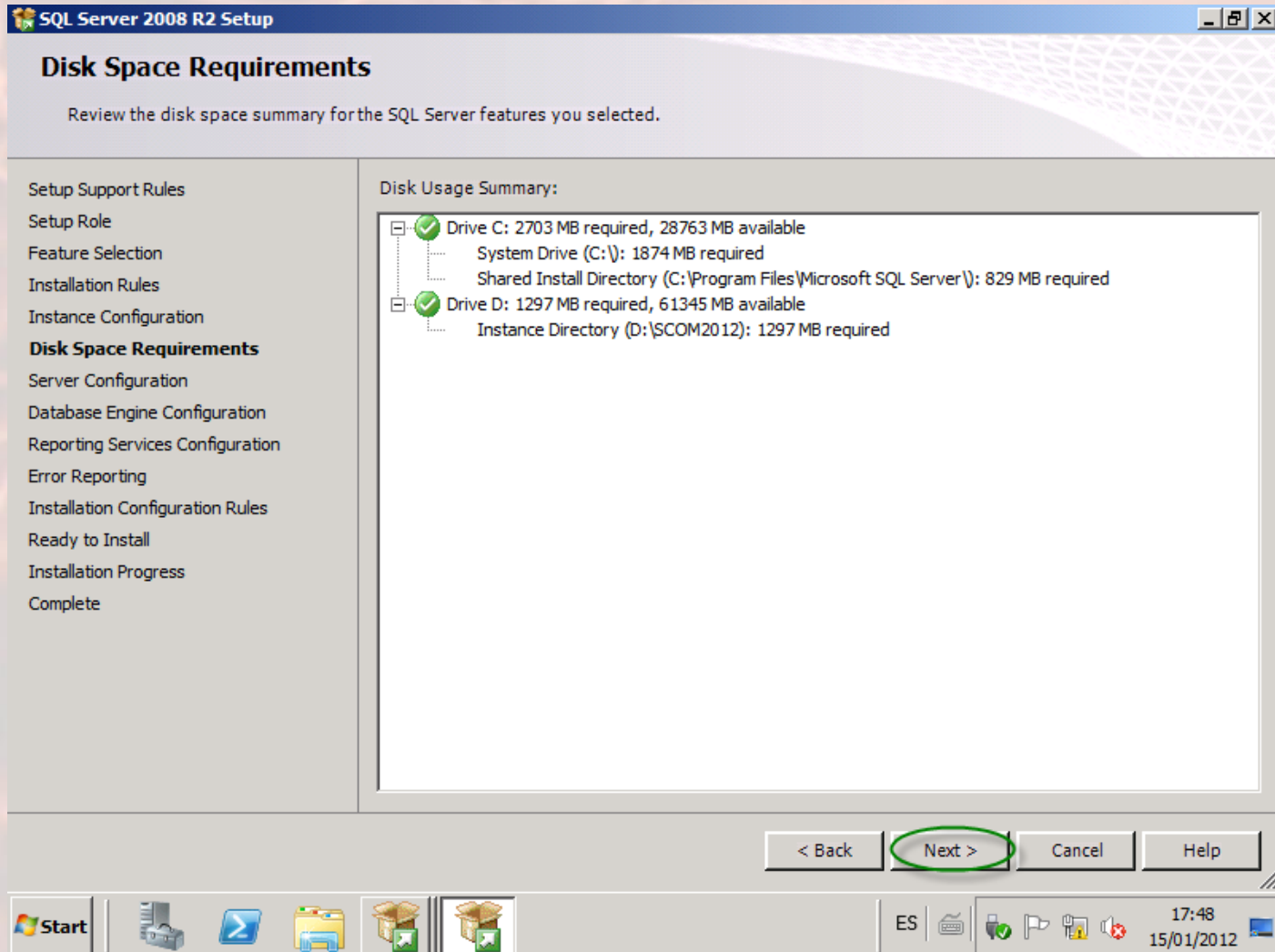
Start | [Taskbar icons] | ES | [System tray icons] | 17:46 15/01/2012



ITSanchez.com.ar

Compartiendo Experiencia
Windows, Linux y mas...

Seleccionamos -> Next





ITSanchez.com.ar

Compartiendo Experiencia
Windows, Linux y mas...

Seleccionamos -> Use the same account for all SQL Server Services

SQL Server 2008 R2 Setup

Server Configuration

Specify the service accounts and collation configuration.

Setup Support Rules
Setup Role
Feature Selection
Installation Rules
Instance Configuration
Disk Space Requirements
Server Configuration
Database Engine Configuration
Reporting Services Configuration
Error Reporting
Installation Configuration Rules
Ready to Install
Installation Progress
Complete

Service Accounts | Collation

Microsoft recommends that you use a separate account for each SQL Server service.

Service	Account Name	Password	Startup Type
SQL Server Agent			Manual
SQL Server Database Engine			Automatic
SQL Server Reporting Services			Automatic
SQL Full-text Filter Daemon Launcher	NT AUTHORITY\LOCAL ...		Manual
SQL Server Browser	NT AUTHORITY\LOCAL ...		Automatic

Use the same account for all SQL Server services

< Back Next > Cancel Help

Start ES 18:11 15/01/2012



ITSanchez.com.ar

Compartiendo Experiencia
Windows, Linux y mas...

Validamos la cuenta de Servicio → Ok

Use the same account for all SQL Server 2008 R2 services

Specify a user name and password for all SQL Server service accounts.

Account Name:

Password:

Seleccionamos la solapa → Collation

SQL Server 2008 R2 Setup

Server Configuration

Specify the service accounts and collation configuration.

Setup Support Rules
Setup Role
Feature Selection
Installation Rules
Instance Configuration
Disk Space Requirements

Service Accounts **Collation**

Microsoft recommends that you use a separate account for each SQL Server service.

Service	Account Name	Password	St
SQL Server Agent	ITSANCHEZ\sql	*****	Ma
SQL Server Database Engine	ITSANCHEZ\sql	*****	Au



ITSanchez.com.ar

Compartiendo Experiencia
Windows, Linux y mas...

Seleccionar Customize... → Configurar SQL_Latin1_General_CP1_CI_AS (única soportada por SCOM 2012)

Service Accounts Collation

Database Engine:

SQL_Latin1_General_CP1_CI_AS Customize...

Latin1-General, case-insensitive, accent-sensitive, kanatype-insensitive, width-insensitive for Unicode Data, SQL Server Sort Order 52 on Code Page 1252 for non-Unicode Data

Seleccionamos → Next

< Back Next > Cancel Help

PASO IMPORTANTE SIN SELECCIONAR COLLATION NO ES POSIBLE INSTALAR SCOM 2012



ITSanchez.com.ar

Compartiendo Experiencia
Windows, Linux y mas...

Seleccionamos las cuentas con permisos de administrador -> Next

SQL Server 2008 R2 Setup

Database Engine Configuration

Specify Database Engine authentication security mode, administrators and data directories.

Setup Support Rules
Setup Role
Feature Selection
Installation Rules
Instance Configuration
Disk Space Requirements
Server Configuration
Database Engine Configuration
Reporting Services Configuration
Error Reporting
Installation Configuration Rules
Ready to Install
Installation Progress
Complete

Account Provisioning | Data Directories | FILESTREAM

Specify the authentication mode and administrators for the Database Engine.

Authentication Mode

☒ Windows authentication mode
☐ Mixed Mode (SQL Server authentication and Windows authentication)

Specify the password for the SQL Server system administrator (sa) account.

Enter password:
Confirm password:

Specify SQL Server administrators

SCOM\Administrator (Administrator)	SQL Server administrators have unrestricted access to the Database Engine.
ITSANCHEZ\Domain Admins (Domain Admins)	

Add Current User Add... Remove

< Back Next > Cancel Help

Start ES 18:16 15/01/2012



ITSanchez.com.ar

Compartiendo Experiencia
Windows, Linux y mas...

Seleccionamos -> Next

SQL Server 2008 R2 Setup

Reporting Services Configuration

Specify the Reporting Services configuration mode.

Setup Support Rules	<input checked="" type="radio"/> Install the native mode default configuration.
Setup Role	Setup will install the report server and configure it in Native mode to use the default values. The report server is usable as soon as Setup is finished.
Feature Selection	<input type="radio"/> Install the SharePoint integrated mode default configuration.
Installation Rules	Setup will create the report server database in SharePoint integrated mode and configure the report server to use the default values. However, integrated operations will not be supported until a minimal installation of a SharePoint product or technology is deployed on the report server computer and the Reporting Services Add-in for SharePoint Technologies is installed and configured on the instance of the SharePoint product or technology you are using.
Instance Configuration	<input type="radio"/> Install, but do not configure the report server.
Disk Space Requirements	Setup will install, but will not configure, the report server software. After installation is finished, you can use the Reporting Services Configuration tool to set options that are required to run the report server.
Server Configuration	
Database Engine Configuration	
Reporting Services Configuration	
Error Reporting	
Installation Configuration Rules	
Ready to Install	
Installation Progress	
Complete	

< Back **Next >** Cancel Help

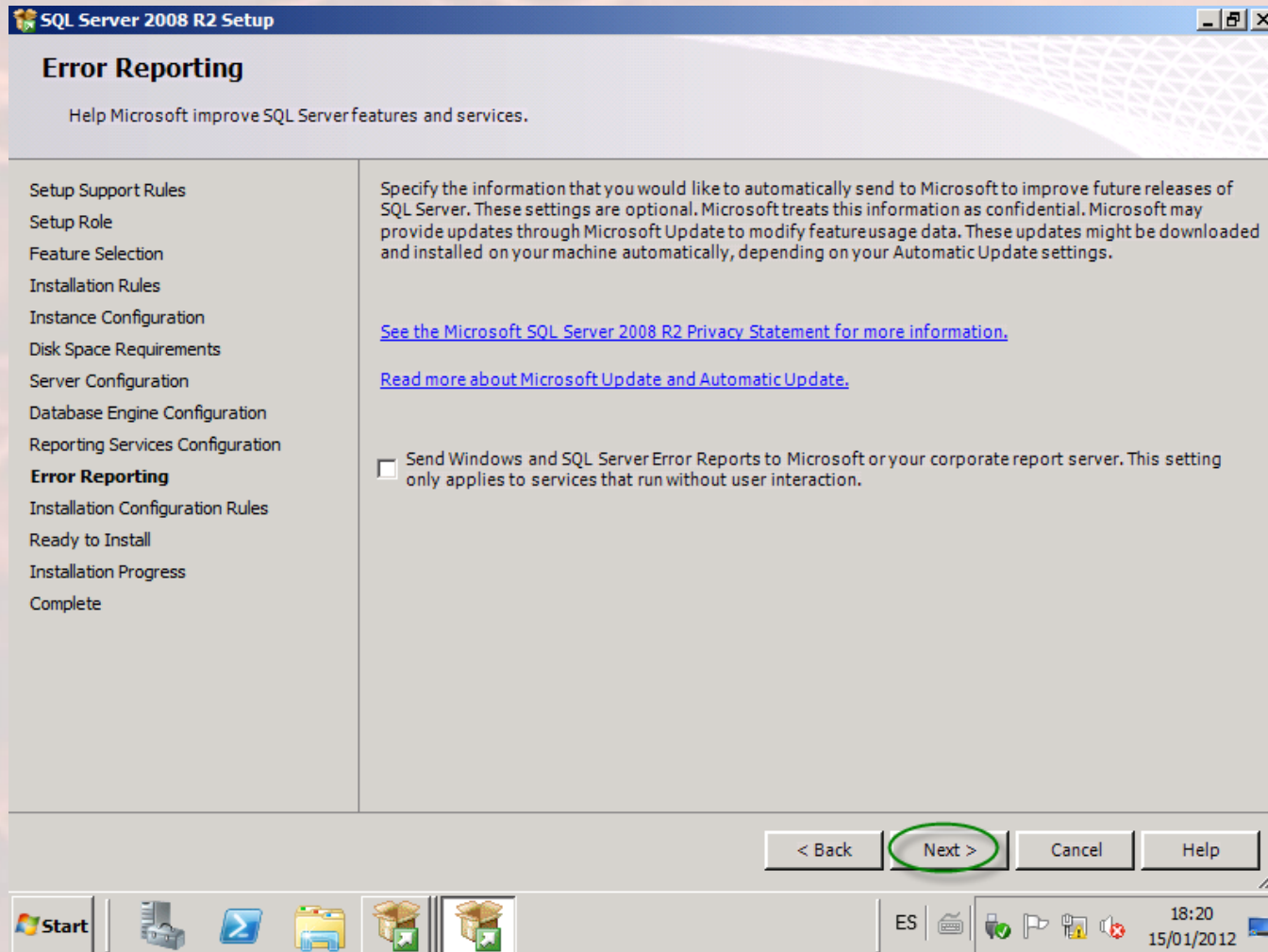
Start [Taskbar Icons] ES [System Tray Icons] 18:19 15/01/2012



ITSanchez.com.ar

Compartiendo Experiencia
Windows, Linux y mas...

Seleccionamos -> Next





ITSanchez.com.ar

Compartiendo Experiencia
Windows, Linux y mas...

Seleccionamos -> Next

SQL Server 2008 R2 Setup

Installation Configuration Rules

Setup is running rules to determine if the installation process will be blocked. For more information, click Help.

Setup Support Rules
Setup Role
Feature Selection
Installation Rules
Instance Configuration
Disk Space Requirements
Server Configuration
Database Engine Configuration
Reporting Services Configuration
Error Reporting
Installation Configuration Rules
Ready to Install
Installation Progress
Complete

Operation completed. Passed: 6. Failed 0. Warning 0. Skipped 2.

Hide details << Re-run

[View detailed report](#)

Rul	Rule	Status
✓	FAT32 File System	Passed
✓	Instance name	Not applicable
✓	SQL Server 2008 Analysis Services (64-bit) install action	Not applicable
✓	Existing clustered or cluster-prepared instance	Passed
✓	Cross language installation	Passed
✓	Same architecture installation	Passed
✓	Reporting Services Catalog Database File Existence	Passed
✓	Reporting Services Catalog Temporary Database File Existence	Passed

< Back **Next >** Cancel Help

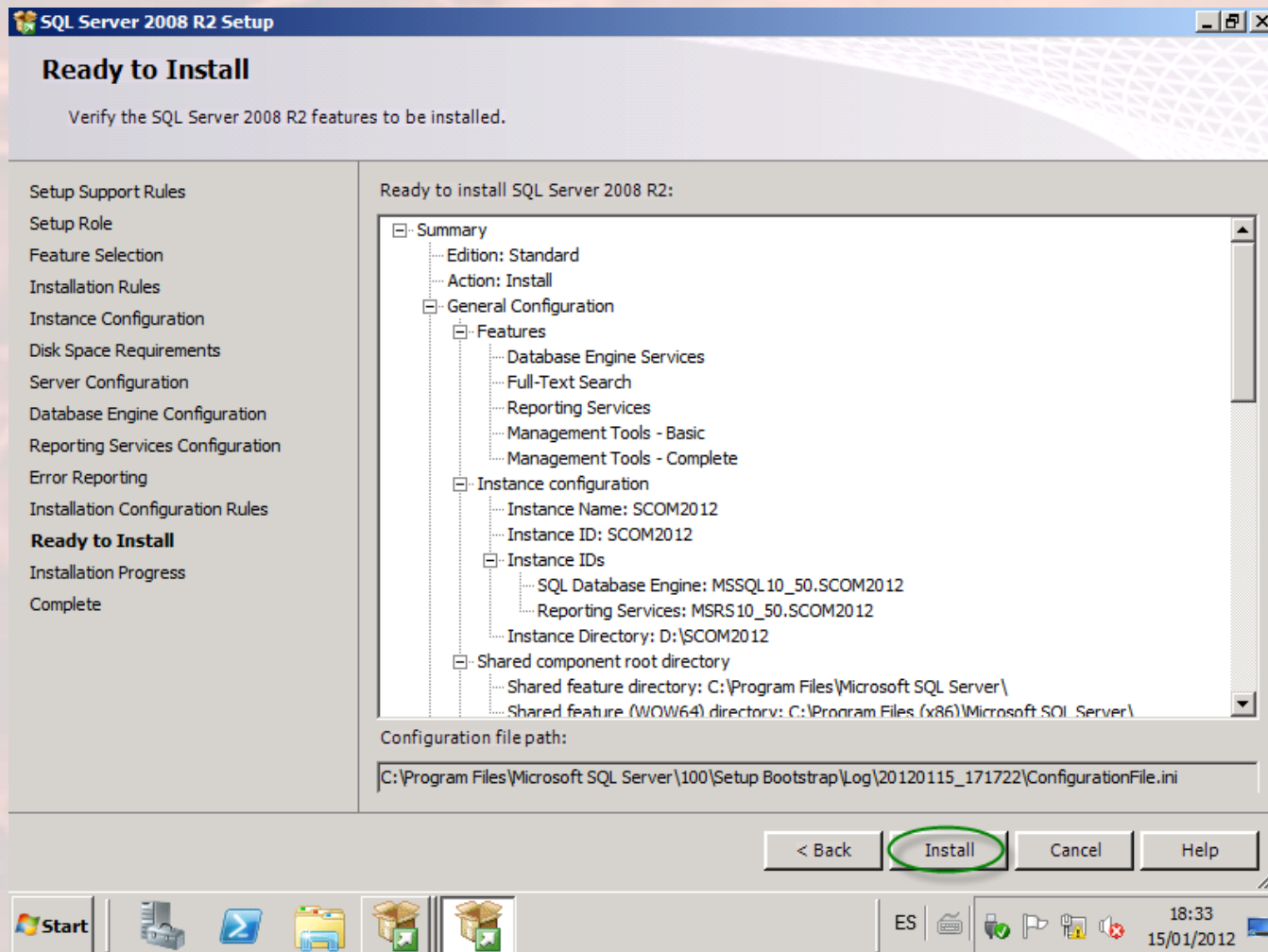
Start | [Taskbar icons] | ES | [System tray icons] | 18:22 15/01/2012



ITSanchez.com.ar

Compartiendo Experiencia
Windows, Linux y mas...

Seleccionamos -> Install

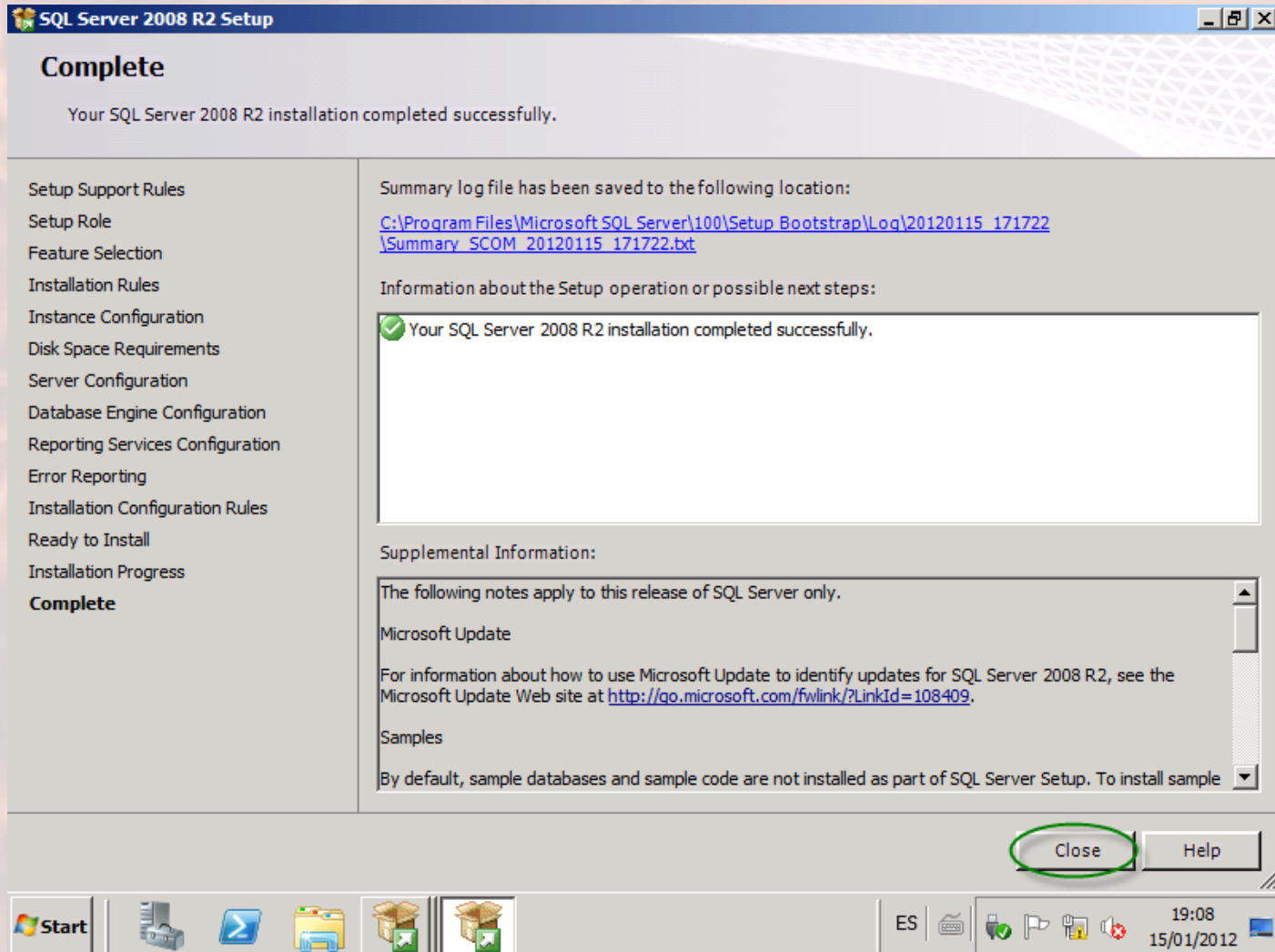




ITSanchez.com.ar

Compartiendo Experiencia
Windows, Linux y mas...

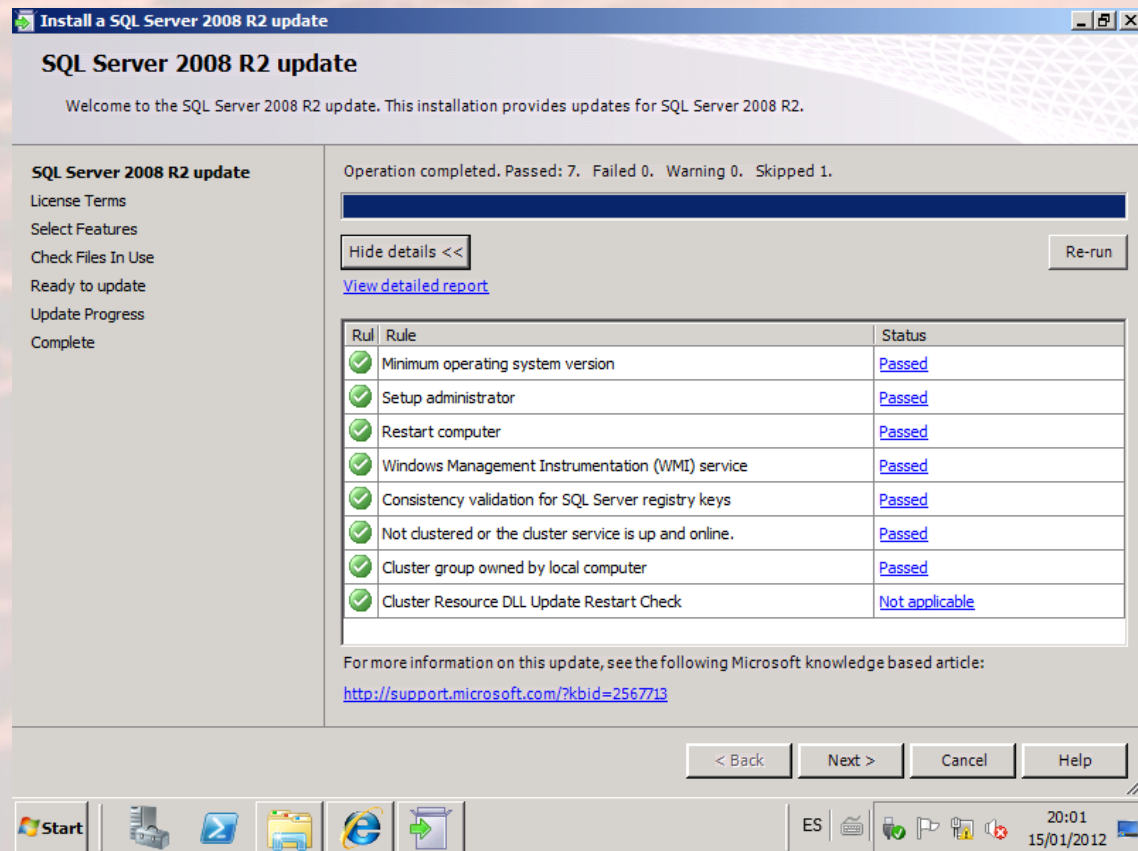
Seleccionamos -> Close -> Cerramos en instalador de SQL Server





ITSanchez.com.ar
Compartiendo Experiencia
Windows, Linux y mas...

Debemos instalar SQL 2008 R2 CU 9, se descarga desde
<http://support.microsoft.com/kb/2567713> (registrarse y llegan los pasos por mail)



Seguir el asistente con los valores predeterminados para instalar la actualización



ITSanchez.com.ar

Compartiendo Experiencia
Windows, Linux y mas...

Montamos el ISO de SCOM 2012 RC -> Iniciamos el instalador -> Install





ITSanchez.com.ar

Compartiendo Experiencia
Windows, Linux y mas...

Seleccionamos -> Management Server / Cosole -> Next

Operations Manager Setup [X]

Getting Started

Select features to install

If the operating system on this computer is not supported for one of the features, the feature cannot be installed.

Expand all [v]

<input checked="" type="checkbox"/> Management server	[v]
<input checked="" type="checkbox"/> Management console	[v]
<input type="checkbox"/> Web console	[v]
<input type="checkbox"/> Reporting server	[v]

Supported Configurations

Previous **Next >** Cancel



ITSanchez.com.ar

Compartiendo Experiencia
Windows, Linux y mas...

Seleccionamos → Next

Operations Manager Setup [X]

Getting Started

Select installation location

The recommended location for program files is displayed.

Location:

C:\Program Files\System Center Operations Manager 2012 [Browse...]

Required space: 1305 MB Free space: 25,1GB

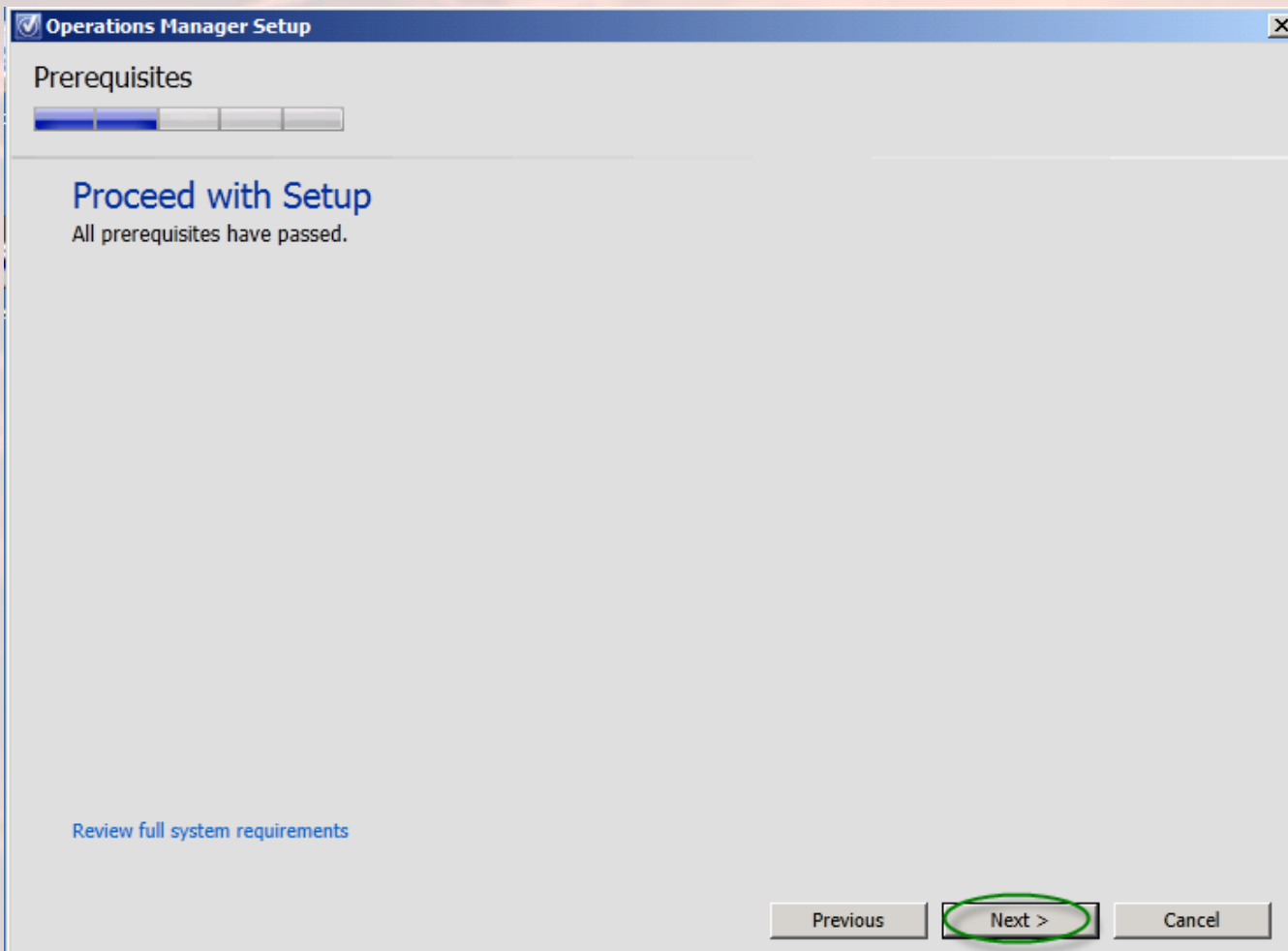
Previous [Next >] Cancel



ITSanchez.com.ar

Compartiendo Experiencia
Windows, Linux y mas...

Seleccionamos -> Next





ITSanchez.com.ar

Compartiendo Experiencia
Windows, Linux y mas...

Configuramos nuestro Management Group name: -> Next

Operations Manager Setup

Configuration

Specify an installation option

To proceed with installing a Management server, select an installation option below.

☒ **Create the first Management server in a new management group**

Setup will create a new Operations Manager management group, operational database, and data warehouse, and then it will install the Management server. After you create a management group, you cannot change its name. Before you proceed, ensure that the management group name is unique.

Management group name:

ITSanchez

☐ **Add a Management server to an existing management group**

If you have an existing management group that contains at least one Management server, Setup will install a new Management server that is linked to the existing operational database and data warehouse.

Previous **Next >** Cancel



ITSanchez.com.ar

Compartiendo Experiencia
Windows, Linux y mas...

Aceptamos los términos de licencia -> Next

Operations Manager Setup

Configuration

Please read the license terms

MICROSOFT PRE-RELEASE SOFTWARE LICENSE TERMS

MICROSOFT SYSTEM CENTER 2012 OPERATIONS MANAGER, RELEASE CANDIDATE

These license terms are an agreement between Microsoft Corporation (or based on where you live, one of its affiliates) and you. Please read them. They apply to the pre-release software named above, which includes the media on which you received it, if any. The terms also apply to any Microsoft

- updates,
- supplements,
- Internet-based services, and
- support services

for this software, unless other terms accompany those items. If so, those terms apply.

By using the software, you accept these terms. If you do not accept them, do not use the software.

As described below, using some features also operates as your consent to the transmission of certain standard computer information for Internet-based services.

☒ I have read, understood, and agree with the license terms

[Read our privacy statement](#)

Print...

Previous **Next >** Cancel



ITSanchez.com.ar

Compartiendo Experiencia
Windows, Linux y mas...

Confirmamos los datos del SQL [SCOM\SCOM2012] -> Next

Operations Manager Setup [X]

Configuration

Configure the operational database

Before you click **Next**, verify the database name, the instance name, and the port. Ensure that you have sufficient permissions on the database instance.

Server name and instance name:	SQL Server port:
<input type="text" value="SCOM\SCOM2012"/>	<input type="text" value="1433"/>
<i>Format: server name\instance name</i>	
Database name:	Database size (MB):
<input type="text" value="OperationsManager"/>	<input type="text" value="1000"/>
Data file folder:	<input type="text" value="D:\SCOM2012\MSSQL10_50.SCOM2012\MSSQL\DATA\"/> <input type="button" value="Browse..."/>
Log file folder:	<input type="text" value="D:\SCOM2012\MSSQL10_50.SCOM2012\MSSQL\DATA\"/> <input type="button" value="Browse..."/>



ITSanchez.com.ar

Compartiendo Experiencia
Windows, Linux y mas...

Confirmamos los datos del SQL [SCOM\SCOM2012] -> Next

Operations Manager Setup [X]

Configuration

Configure the data warehouse database

Before you click **Next**, verify the database name, the instance name, and the port. Ensure that you have sufficient permissions on the database instance.

Server name and instance name: SQL Server port:

Format: server name\instance name

☒ Create a new data warehouse database
☐ Use an existing data warehouse from a different management group

Database name: Database size (MB):

Data file folder:

Log file folder:



ITSanchez.com.ar

Compartiendo Experiencia
Windows, Linux y mas...

Seleccionamos los usuarios -> Next

Operations Manager Setup [X]

Configuration

Configure Operations Manager accounts

If you want to use a single account for all services, verify that the account has all the required rights. For more information, see the Operations Manager deployment documentation.

Account Name	Local System	Domain Account	Domain\User Name	Password
Management server action account	<input type="radio"/>	<input checked="" type="radio"/>	ITSANCHEZ\administrator
System Center Configuration service and System Center Data Access service	<input checked="" type="radio"/>	<input type="radio"/>		
Data Reader account		<input checked="" type="radio"/>	ITSANCHEZ\sql
Data Writer account		<input checked="" type="radio"/>	ITSANCHEZ\sql

[Operations Manager Security Guide](#)

Previous **Next >** Cancel



ITSanchez.com.ar

Compartiendo Experiencia
Windows, Linux y mas...

Seleccionamos → Next

Operations Manager Setup [X]

Configuration

Help improve Operations Manager 2012
Customer Experience Improvement Program

The Customer Experience Improvement Program collects data about your use of Microsoft applications to identify possible improvements for Microsoft products.

☐ Yes, I am willing to participate anonymously in the Customer Experience Improvement Program
☒ No, I am not willing to participate

Error Reporting

When a program error occurs, information about the error can be anonymously reported to Microsoft. This information is used to help identify and resolve common issues with Operations Manager.

☐ Yes, I am willing to participate anonymously. Please automatically send my error reports.
☐ Yes, I am willing to participate anonymously. Please queue the reports so that I can choose when to send them.
☒ No, I am not willing to participate

[Read more about these program\(s\)](#)

Previous **Next >** Cancel



ITSanchez.com.ar

Compartiendo Experiencia
Windows, Linux y mas...

Seleccionamos tipo de actualizaciones -> Next

Operations Manager Setup [X]

Configuration

Microsoft Update

Microsoft Update offers security updates and other important updates for Windows and other Microsoft software, including Operations Manager. Updates can be delivered using Automatic Updates, or you can visit the Microsoft Update web site.

☒ **On (recommended)**
Use Microsoft Update to check for updates.

☐ **Off**
Do not automatically check for updates.

[Update Services privacy statement](#)

Previous **Next >** Cancel



ITSanchez.com.ar

Compartiendo Experiencia
Windows, Linux y mas...

Seleccionamos -> Install

Operations Manager Setup

Configuration

Installation Summary

Review your selections for the features that you are installing. To continue, click **Install**. To change your selections, click **Previous**.

Installation location:
C:\Program Files\System Center Operations Manager 2012

Management group name:
ITSanchez

Operational database:
OperationsManager will be created on SCOM\SCOM2012

Database size (MB):
1000

Data warehouse database:
OperationsManagerDW will be created on SCOM\SCOM2012

Data warehouse database size (MB):
1000

Management server action account:
ITSANCHEZ\administrator

System Center Configuration service and System Center Data Access service account:
Local System

Previous **Install** **Cancel**



ITSanchez.com.ar

Compartiendo Experiencia
Windows, Linux y mas...

Seleccionamos Close para terminar la instalación

