

Microsoft®

# System Center

# Virtual Machine Manager 2012

## Proyecto Instalación

VMM 2012 RTM



**ITSanchez.com.ar**

Compartiendo Experiencia  
Windows, Linux y mas...



# System Center Virtual Machine Manager 2012 RTM

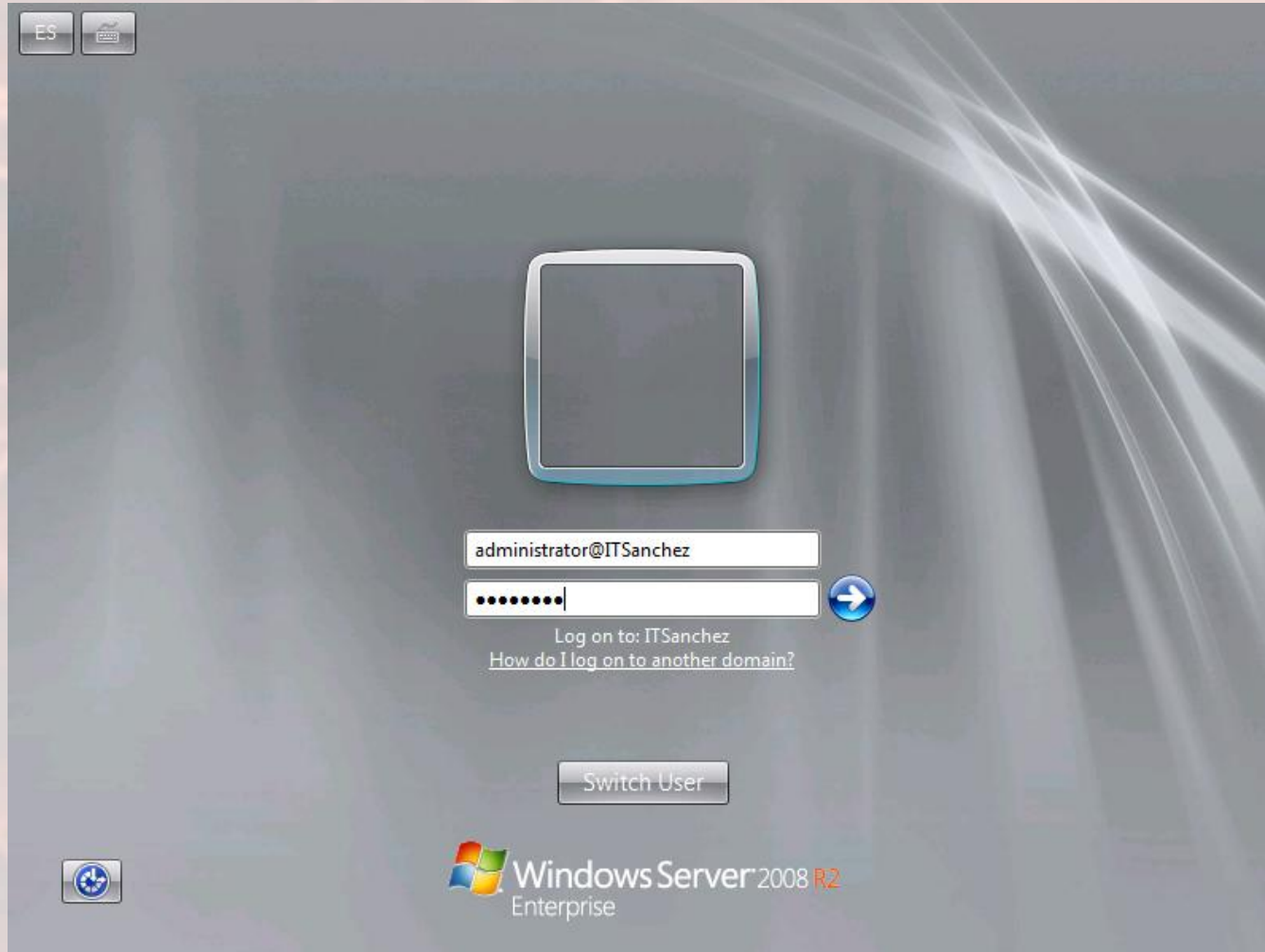
- Se realiza la instalación de Exchange Server 2010 en Windows 2008 R2
- **Requerimientos:**
  - 1 Controlador de Domino de Windows 2003 R2
  - 1 Servidor Miembro Windows 2008 R2 (VMM 2012 + SQL)
  - SQL Server 2008 R2 (Instalado) <http://bit.ly/I0gsnl>
  - Windows AIK (Instalado) <http://bit.ly/AIK-W7> (descarga) la instalación es muy simple
- **Material Complementario:**
  - Requerimientos de Sistema <http://bit.ly/vmm2012Req>
  - Arquitectura y Puertos <http://bit.ly/Hsch5U>



# ITSanchez.com.ar

Compartiendo Experiencia  
Windows, Linux y mas...

Ingresamos al equipo donde se instalara VMM 2012





# ITSanchez.com.ar

Compartiendo Experiencia  
Windows, Linux y mas...

Montamos el DVD de instalación de VMM 2012 RTM – Ejecutamos **setup.exe** -> **Seleccionamos Install**

Microsoft  
**System Center 2012**

---

## Virtual Machine Manager

→ **Install**

- Restart may be required
- Before you begin
- Get the latest updates to Virtual Machine Manager from Microsoft Update

[\(VMM Privacy Statement\)](#)

**Optional Installations**

- **Local Agent**  
Installs agent on local machine.

**Information**

- [Release Notes](#)
- [Installation Guide](#)
- [Browse the CD](#)
- [System Center Online](#)
- [VMM Configuration Analyzer](#)

© 2012 Microsoft Corporation. All rights reserved. Close



# ITSanchez.com.ar

Compartiendo Experiencia  
Windows, Linux y mas...

Seleccionar -> VMM Management Server, VMM Console -> Next

Microsoft System Center 2012 Virtual Machine Manager Setup Wizard

Getting started [Report a problem](#)

Select features to install

Expand all ▾

- VMM management server ▾
- VMM console ▾
- VMM Self-Service Portal ▾

Previous **Next >** Cancel



# ITSanchez.com.ar

Compartiendo Experiencia  
Windows, Linux y mas...

Completamos los datos de registro -> Next

Microsoft System Center 2012 Virtual Machine Manager Setup Wizard

Getting started [Report a problem](#)

**Product registration information**

Name:

Organization:

Product key:



# ITSanchez.com.ar

Compartiendo Experiencia  
Windows, Linux y mas...

Aceptamos la licencia -> Next

Microsoft System Center 2012 Virtual Machine Manager Setup Wizard

Getting started [Report a problem](#)

Please read this license agreement

**MICROSOFT SOFTWARE LICENSE TERMS**

**MICROSOFT SYSTEM CENTER 2012 CONFIGURATION MANAGER**

**MICROSOFT SYSTEM CENTER 2012 CLIENT MANAGEMENT SUITE**

**MICROSOFT SYSTEM CENTER 2012 STANDARD**

**MICROSOFT SYSTEM CENTER 2012 DATACENTER**

---

These license terms are an agreement between Microsoft Corporation (or based on where you live, one of its affiliates) and you. Please read them. They apply to the software named above, which includes the media on which you received it, if any. The terms also apply to any Microsoft

- updates,

I have read, understood, and agree with the terms of the license agreement [Print](#)

[VMM Privacy Statement](#)

[Previous](#) [Next >](#) [Cancel](#)



# ITSanchez.com.ar

Compartiendo Experiencia  
Windows, Linux y mas...

Seleccionamos → Next

Microsoft System Center 2012 Virtual Machine Manager Setup Wizard

Getting started [Report a problem](#)

Join the Customer Experience Improvement Program (CEIP) to help improve the quality, reliability and performance of Microsoft products and services

If you choose to participate:

Microsoft will \_\_\_\_\_

- Collect information about your software and hardware configurations.
- Collect information about how you use our software and services to identify trends and usage patterns.

Microsoft will not \_\_\_\_\_

- Collect your name or address.
- Ask you to take surveys; nor will you be contacted by a sales representative.
- Prompt you with additional messages that might interrupt your work.

Yes, I am willing to participate in the Customer Experience Improvement Program

No, I am not willing to participate

You can stop participating at any time by changing a setting in Customer Experience Improvement Program Settings, found in Settings workspace of the VMM console.

[More about the Customer Experience Improvement Program](#)  
[Privacy Statement for the Microsoft Customer Experience Improvement Program](#)  
[VMM Privacy Statement](#)





# ITSanchez.com.ar

Compartiendo Experiencia  
Windows, Linux y mas...

Seleccionamos → On (recommend) → Next

Microsoft System Center 2012 Virtual Machine Manager Setup Wizard

Getting started [Report a problem](#)

**Microsoft Update**

Microsoft Update offers security and important updates for Windows and other Microsoft software, including System Center 2012 VMM. Updates are delivered using Automatic Updates, or you can visit the Microsoft Update website.

**On (recommended)**  
Use Microsoft Update to check for updates.

**Off**  
Do not automatically check for updates.

[Microsoft Update FAQ](#)  
[Microsoft Update Privacy Statement](#)

Previous **Next >** Cancel



# ITSanchez.com.ar

Compartiendo Experiencia  
Windows, Linux y mas...

Seleccionamos -> Next

Microsoft System Center 2012 Virtual Machine Manager Setup Wizard

Getting started [Report a problem](#)

**Installation location**

The recommended location for program files is displayed.

Location:

Free space 45,78 GB



# ITSanchez.com.ar

Compartiendo Experiencia  
Windows, Linux y mas...

Seleccionamos la instancia de la base de datos -> Next

Microsoft System Center 2012 Virtual Machine Manager Setup Wizard

Configuration [Report a problem](#)

## Database configuration

Provide information about the database that you would like to use for your VMM management server.

Server name:

Port:

Use the following credentials

User name and domain:   
Format: Domain\UserName

Password:

Instance name:

Select an existing database or create a new database.

New database:

Existing database:



# ITSanchez.com.ar

Compartiendo Experiencia  
Windows, Linux y mas...

Seleccionamos el usuario → Next

Microsoft System Center 2012 Virtual Machine Manager Setup Wizard

Configuration [Report a problem](#)

## Configure service account and distributed key management

### Virtual Machine Manager Service Account

Select the account to be used by the VMM service. Highly available VMM installations require the use of a domain account.  
[Which type of account should I use?](#)

Local System account  
 Domain account

User name and domain:  Password:

### Distributed Key Management

Select whether to store encryption keys in Active Directory instead of on the local machine. Highly available VMM installations require the keys be stored in Active Directory.

Store my keys in Active Directory

Provide the location in Active Directory. For example, CN=DKM,DC=contoso,DC=com.

[How do I configure distributed key management?](#)



# ITSanchez.com.ar

Compartiendo Experiencia  
Windows, Linux y mas...

Seleccionamos (si se desea cambiar algún puerto es el momento)→ Next

Microsoft System Center 2012 Virtual Machine Manager Setup Wizard

Configuration [Report a problem](#)

## Port configuration

**Management Server**

Please select the ports for various VMM features.

<input type="text" value="8100"/>	Communication with the VMM console
<input type="text" value="5985"/>	Communication to agents on hosts and library servers
<input type="text" value="443"/>	File transfers to agents on hosts and library servers
<input type="text" value="8102"/>	Communication with Windows Deployment Services
<input type="text" value="8101"/>	Communication with Windows Preinstallation Environment (Windows PE) agents
<input type="text" value="8103"/>	Communication with Windows PE agent for time synchronization



# ITSanchez.com.ar

Compartiendo Experiencia  
Windows, Linux y mas...

Completamos los datos de nuestra librería (L:\Libreria Raiz) → Next

Microsoft System Center 2012 Virtual Machine Manager Setup Wizard

Configuration [Report a problem](#)

## Library configuration

Specify a share for the Virtual Machine Manager library

Create a new library share

Share name:

Share location:

Share description:

Use an existing library share

Share name:

Share location:

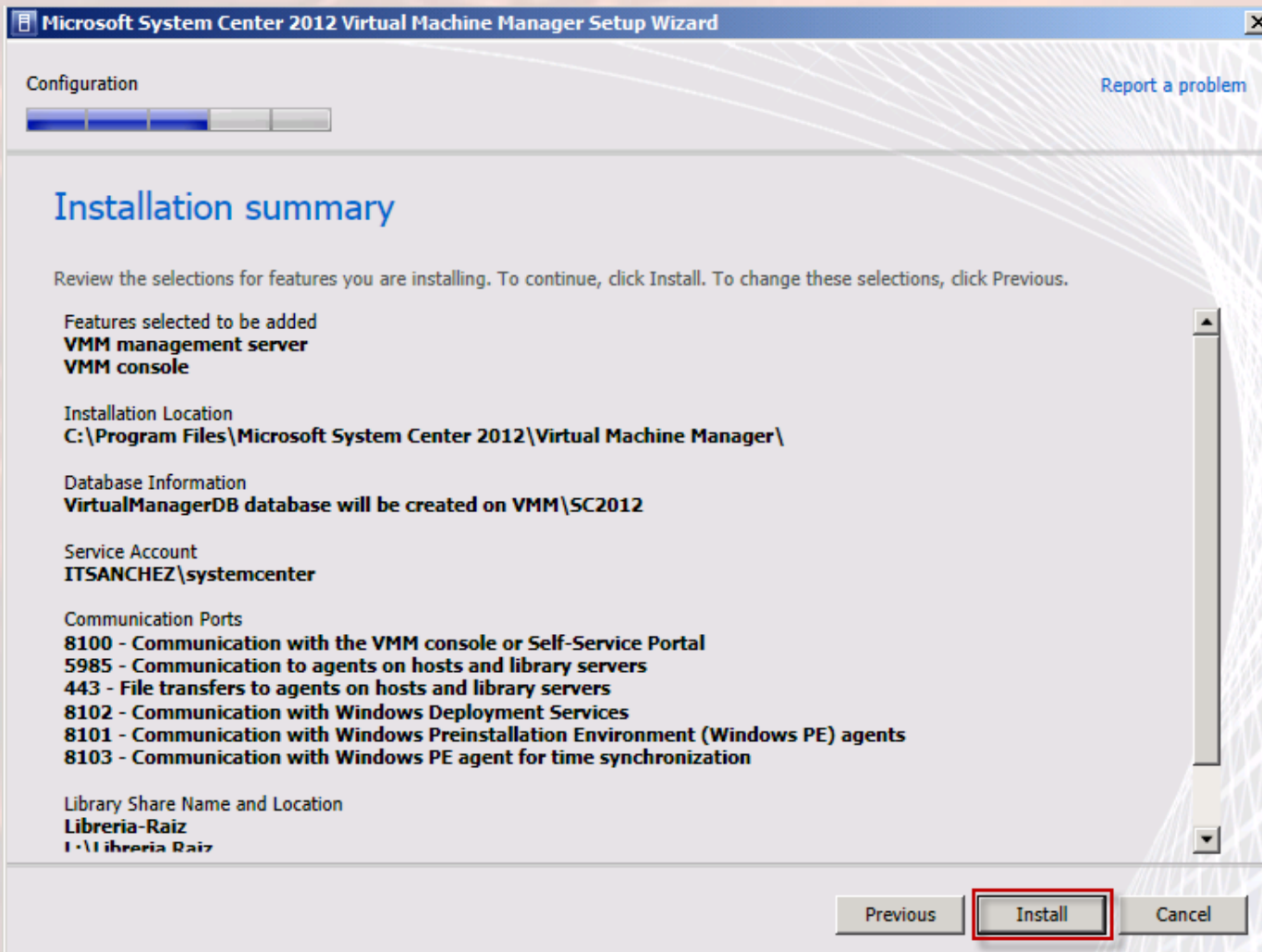
Share description:



# ITSanchez.com.ar

Compartiendo Experiencia  
Windows, Linux y mas...

Seleccionamos -> Install

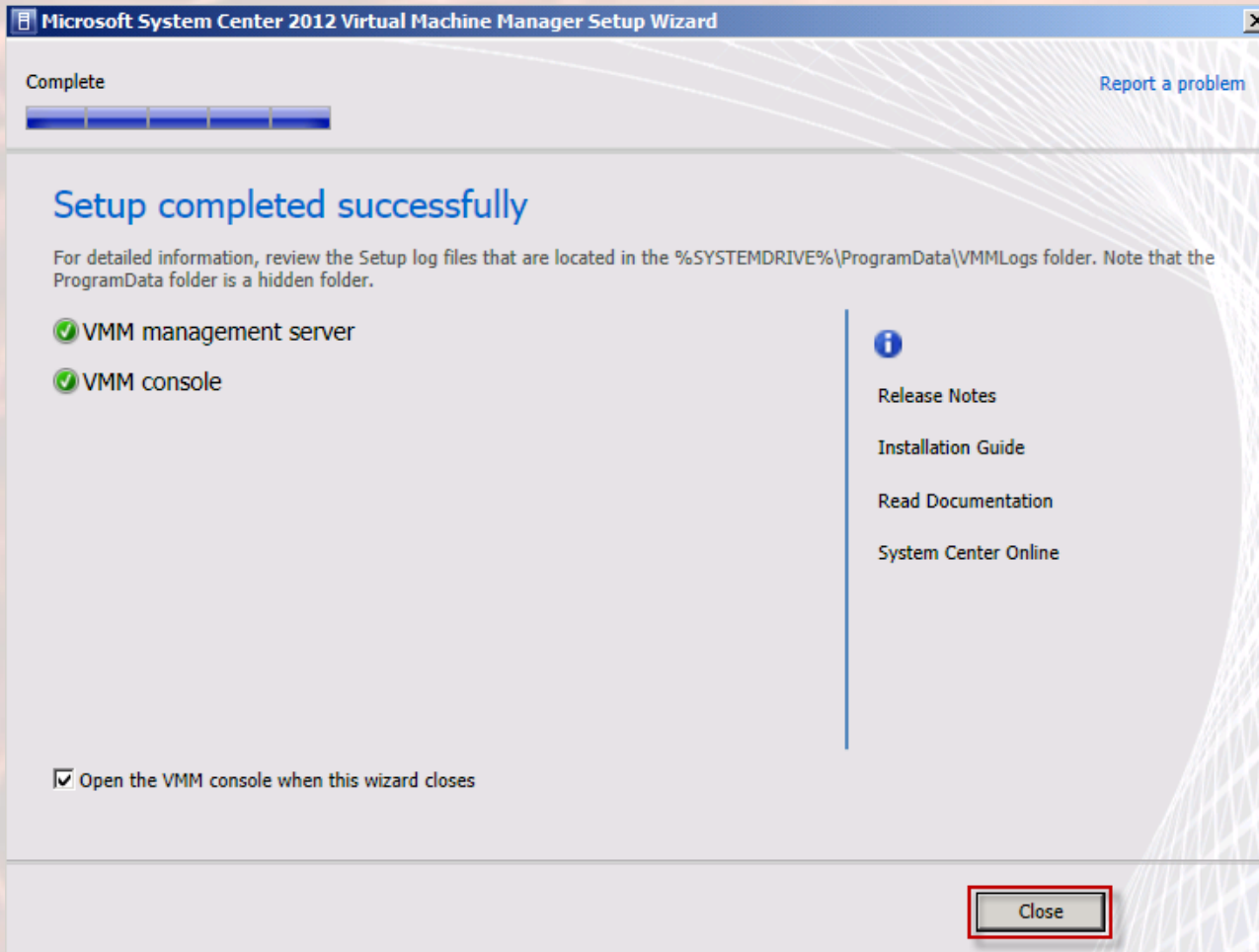




# ITSanchez.com.ar

Compartiendo Experiencia  
Windows, Linux y mas...

Seleccionamos -> Close (se va a abrir la consola de administración de VMM)







**ITSanchez.com.ar**

Compartiendo Experiencia  
Windows, Linux y mas...

Seleccionamos -> Connect

Connect to Server

Microsoft  
System Center 2012

---

Virtual Machine Manager

Server name:   
Example: vmmserver.contoso.com:8100

Use current Microsoft Windows session identity  
 Specify credentials

User name:   
Example: contoso\domainuser

Password:

Automatically connect with these settings



# ITSanchez.com.ar

Compartiendo Experiencia  
Windows, Linux y mas...

## Terminamos nuestra instalación vemos la consola de VMM funcionando!!

Administrator - VMM.itsanchez.local - Virtual Machine Manager

Home Folder

Create Service Create Virtual Machine Create Cloud Create Host Group Assign Cloud Overview VMs Services PowerShell Jobs PRO

VMs and Services

Clouds All Hosts

VMs and Services Fabric Library Jobs Settings

VMs (0)

Name	S...	Virtu...	Host	Cloud	Job Status	Owner	User...	CPU...	Service	Oper...
There are no items to show in this view										

Ready

ES 09:24 p.m. 16/04/2012