



Microsoft®
Lync™ Server 2010

Comunicaciones Unificadas

Instalación Lync 2010
Cumulative Update 4 [CU4]



ITSanchez.com.ar

Compartiendo Experiencia
Windows, Linux y mas...



Instalación Lync Mobile

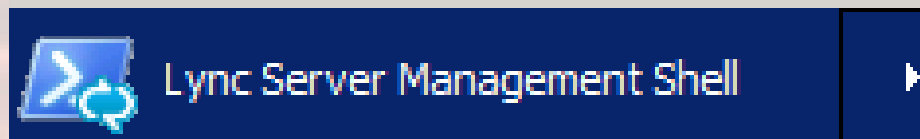
- Para poder soportar Lync Mobile Client es requisito instalar Cumulative Update 4 [CU4]
- **Requerimientos:**
 - Lync 2010 FE / EDGE
 - Descargar LyncServerUpdateInstaller.exe
<http://bit.ly/Lync2010CU4>



ITSanchez.com.ar

Compartiendo Experiencia
Windows, Linux y mas...

En el servidor Frontend de Lync abrimos -> Lync Server Management Shell



Ejecutamos el comando -> Stop-CsWindowsService -Graceful

```
Administrator: Lync Server Management Shell
PS C:\Users\administrator.ITSANCHEZ> Stop-CsWindowsService -Graceful
WARNING: Lync Server services have been stopped, but web components hosted by
IIS may still be running. If lyfe01.itsanchez.local is part of a Front End
pool, stop IIS (W3SVC) to help prevent request failures.
WARNING: "Stop-CsWindowsService" processing has completed with warnings. "1"
warnings were recorded during this run.
WARNING: Detailed results can be found at
"C:\Users\administrator.ITSANCHEZ\AppData\Local\Temp\1\Stop-CsWindowsService-fa
00e252-4cdc-4b85-9cf6-0b7929d0cfbb.html".
PS C:\Users\administrator.ITSANCHEZ>
```

Ejecutamos -> net stop w3svc

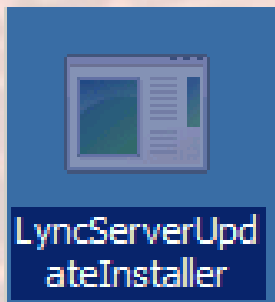
```
PS C:\Users\administrator.ITSANCHEZ> net stop w3svc
The World Wide Web Publishing Service service is stopping.
The World Wide Web Publishing Service service was stopped successfully.
PS C:\Users\administrator.ITSANCHEZ>
```




ITSanchez.com.ar

Compartiendo Experiencia
Windows, Linux y mas...

Ejecutamos -> LyncServerUpdateInstaller.exe



Ejecutamos -> Install Updates

KB #	Description	Update Version	Installed Version	Latest Installed?
2695369	Update for Core Components	4.0.7577.197	4.0.7577.0	✘
2670539	Update for Runtime	4.0.7577.190	4.0.7577.0	✘
2670358	Update for Administrative Tools	4.0.7577.190	4.0.7577.0	✘
2670540	Update for Conferencing Attendant	4.0.7577.190	4.0.7577.0	✘
2658810	Update for Core Components	4.0.7577.190	4.0.7577.0	✘

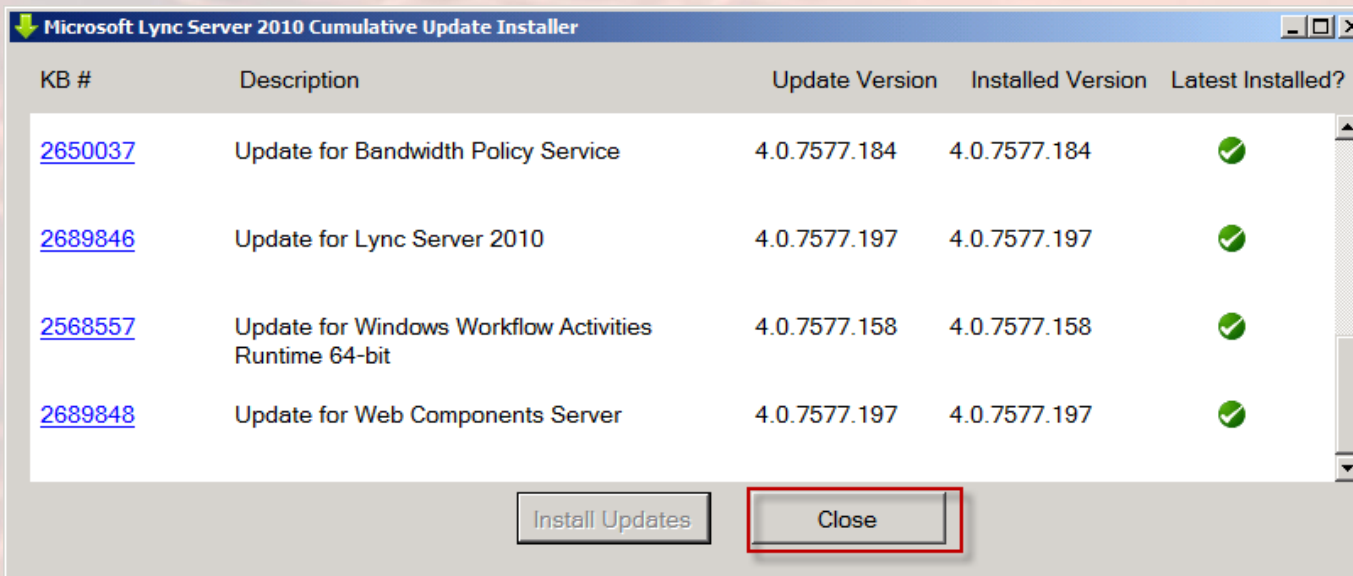
Install Updates Close



ITSanchez.com.ar

Compartiendo Experiencia
Windows, Linux y mas...

Seleccionamos → Close



Debemos actualizar la base de datos desde Lync Server Management Shell
Ejecutamos → **Install-CsDatabase –Update –LocalDatabases**

```
failed to set dbowner to sa
ITSANCHEZ\RTCUniversalServerAdmins has a Win32_Account instance of SIDType 2
Refreshing existing ITSANCHEZ\RTCUniversalServerAdmins SQL login
Refreshing existing ITSANCHEZ\RTCUniversalServerAdmins db user in lis
Adding ITSANCHEZ\RTCUniversalServerAdmins SQL login
Adding ITSANCHEZ\RTCUniversalServerAdmins db user in lis
Adding user ITSANCHEZ\RTCUniversalServerAdmins to role AdminRole
Successfully added logins and db users to the specified database roles in lis
Exit code: SUCCESS (0)
PS C:\Users\administrator.ITSANCHEZ>
```

Reiniciamos nuestro servidor, repetimos el procedimiento en nuestro EDGE sin la actualización del a base de datos que solo se ejecuta en el FrontEND