



Microsoft®

Lync™ Server 2010

## Comunicaciones Unificadas

integración Lync 2010 / OWA 2010



**ITSanchez.com.ar**

Compartiendo Experiencia  
Windows, Linux y mas...



# Integración Lync 2010 / OWA 2010





- Para los clientes que acceden al correo desde la web vamos a integrar Lync para que dispongan de sus contactos de Chat dentro del Webmail
- **Requerimientos:**  
Lync 2010 FE + Exchange 2010
- **Pre Requisitos Descargar:**
  - **01.OCS 2007 R2 Web Server Provider**  
<http://bit.ly/OSC2007WebProv>
  - **02.OCS 2007 R2 Web Server Provider Hotfix**  
<http://bit.ly/OCS2007WebProvHFix>
  - **03.Update Unified Communications Manage API 2.0 Redist Hotfix**  
<http://bit.ly/UMApi2Fix>
  - **04.Exchange 2010 UCMAREDIST**  
<http://bit.ly/UCMAREDIST>




# ITSanchez.com.ar

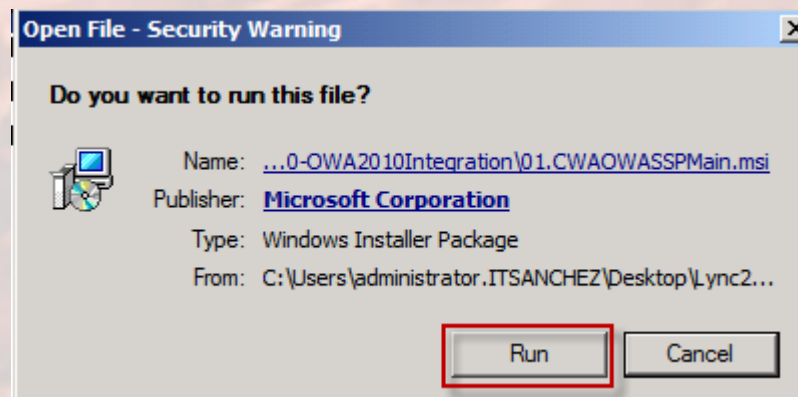
Compartiendo Experiencia  
Windows, Linux y mas...

Descargamos los pre requisitos y los copiamos en nuestro Exchange con el rol CAS con el siguiente orden (Muy Importante)

 01.CWAOWASSPMain	09/05/2012 11:40	Windows Installer P...	10.642 KB
 02.CWAOWASSP	09/05/2012 11:39	Windows Installer P...	136 KB
 03.UcmaRedist	09/05/2012 11:42	Windows Installer P...	4.132 KB
 04.UcmaRedistHF	09/05/2012 11:44	Windows Installer P...	4.137 KB

Ejecutamos el primer archivo -> **Run**

 01.CWAOWASSPMain	09/05/2012 11:40	Windows Installer P...	10.642 KB
--	------------------	------------------------	-----------



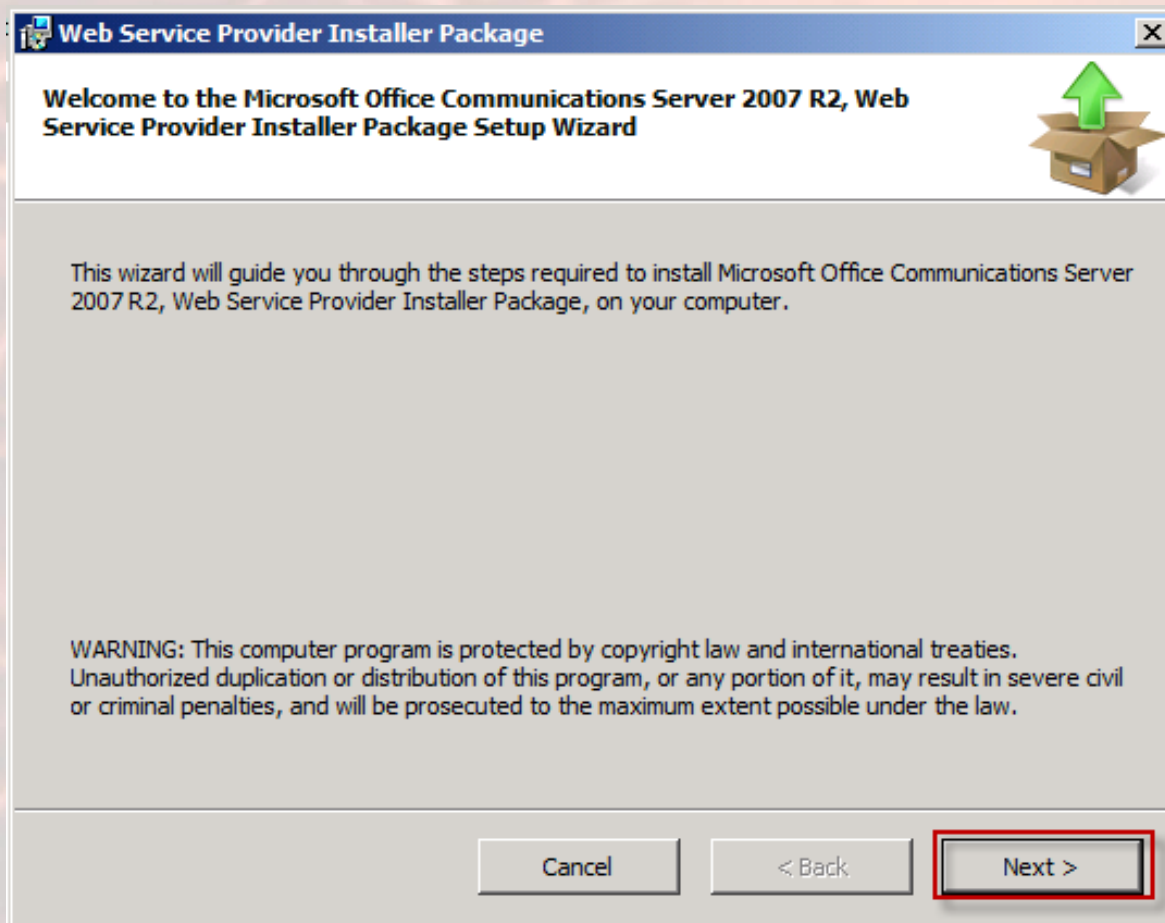




# ITSanchez.com.ar

Compartiendo Experiencia  
Windows, Linux y mas...

Seleccionamos -> Next

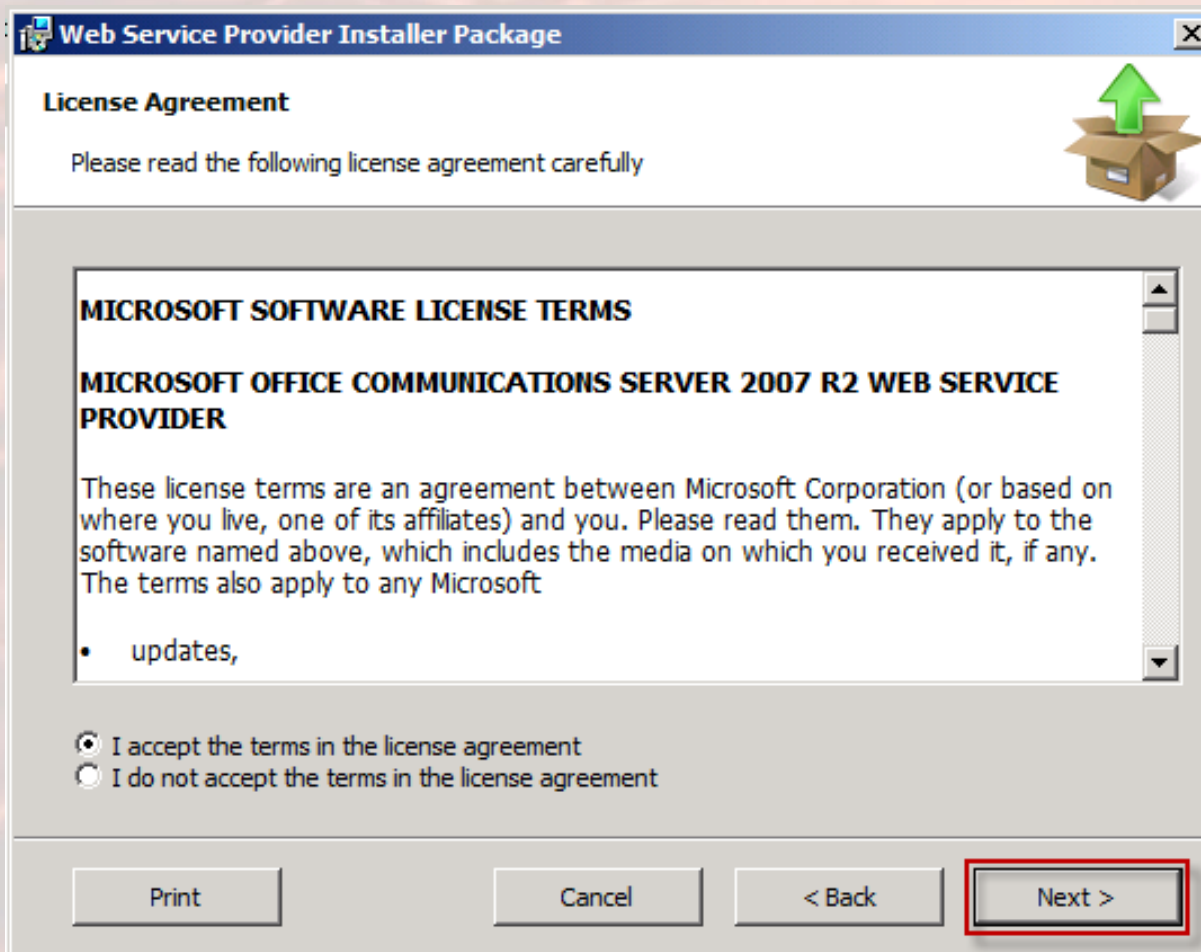




# ITSanchez.com.ar

Compartiendo Experiencia  
Windows, Linux y mas...

Seleccionamos -> I accept the terms in the licence agreement -> Next






# ITSanchez.com.ar

Compartiendo Experiencia  
Windows, Linux y mas...

Seleccionamos -> Next

**Web Service Provider Installer Package**

**Install location for Microsoft Office Communications Server 2007 R2, Web Service Provider Installer Package**



Please specify the location where Microsoft Office Communications Server 2007 R2, Web Service Provider Installer Package is to be installed.

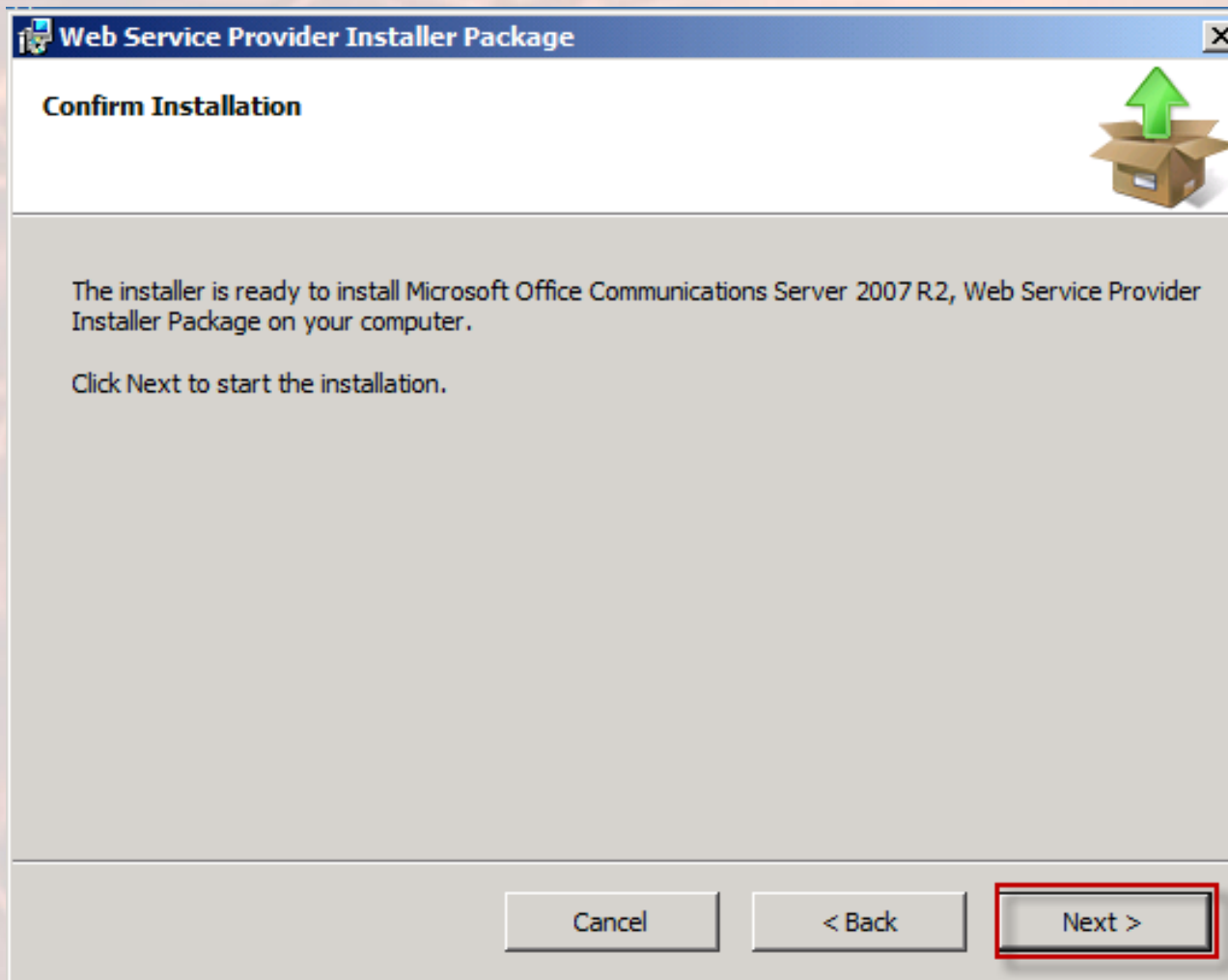
Location:



# ITSanchez.com.ar

Compartiendo Experiencia  
Windows, Linux y mas...

Seleccionamos -> **Next**



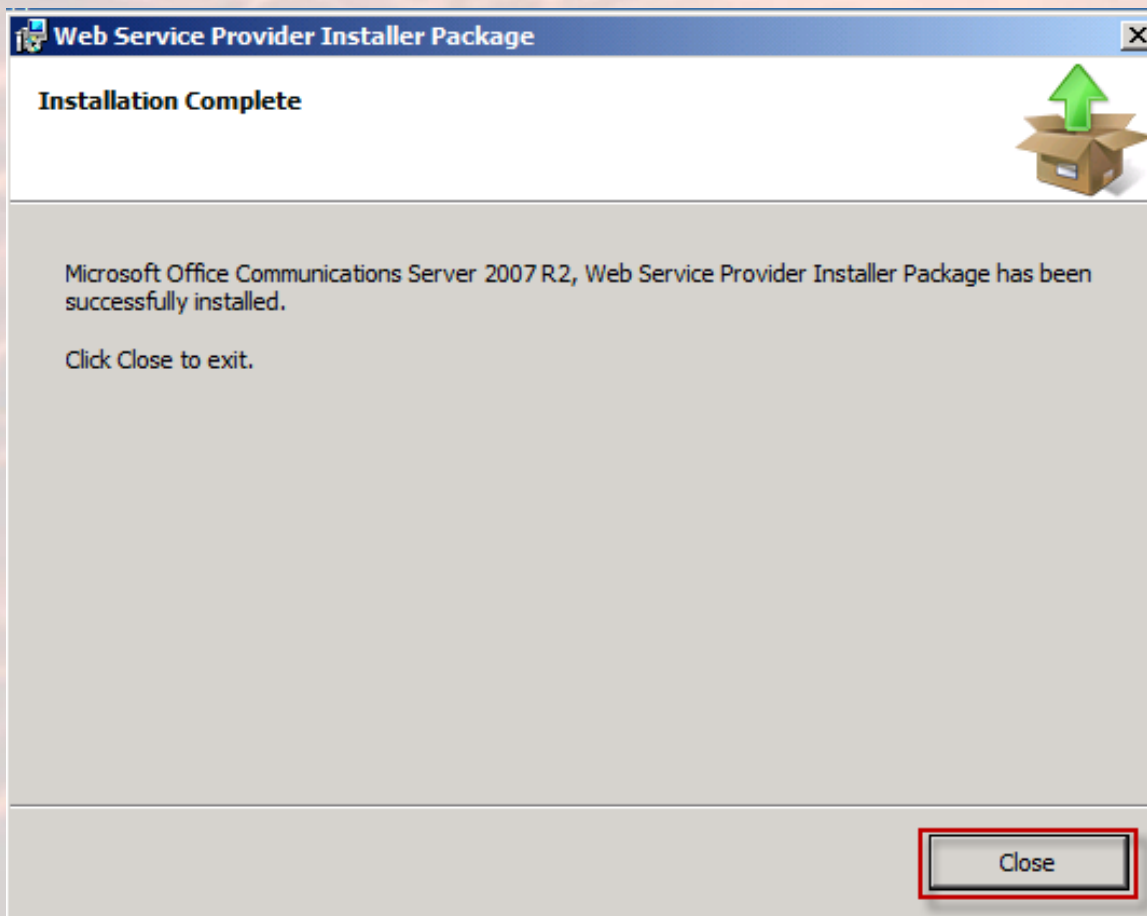




# ITSanchez.com.ar

Compartiendo Experiencia  
Windows, Linux y mas...

Seleccionamos -> Close














# ITSanchez.com.ar

Compartiendo Experiencia  
Windows, Linux y mas...

Con los archivos de la carpeta `c:\Web Service Provider Instaler Package`, y los que decargamos los unificamos e instalamos en el siguiente orden

 1. vcredist_x64	15/12/2008 09:29	Application	2,319 KB
 2. UcmaRedist	06/10/2009 16:57	Windows Installer P...	5,241 KB
 3. UcmaRedistHF	25/02/2010 15:08	Windows Installer P...	3,930 KB
 4. UcmaRedistHFW2K8r2	22/09/2010 09:22	Windows Installer P...	4,119 KB
 5. CWAOWASSP	05/11/2009 12:45	Windows Installer P...	275 KB
 6. UpdateCWAOWASSP	22/09/2010 09:21	Windows Installer P...	136 KB
 dotnetfx35setup	06/10/2009 16:57	Application	2,891 KB

**NOTA:** Si comentemos algún error se obtendrá un error en el visor de eventos de Exchange que informa que no se encuentra una DLL de Lync, si esto sucede repetir la instalación de estos paquetes.



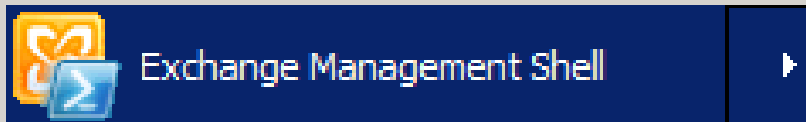
# ITSanchez.com.ar

Compartiendo Experiencia  
Windows, Linux y mas...

Validamos que estos paquetes estén instalados en nuestro Exchange

```
Microsoft Office Communications Server 2007 R2, Web Service Provider
Microsoft Office Communications Server 2007 R2, Web Service Provider Installer Package
Microsoft Server Speech Platform Runtime (x64)
Microsoft Unified Communications Managed API, Core Runtime 64-bit
Microsoft Unified Communications Managed API, Runtime Installer package
Microsoft Visual C++ 2008 Redistributable - x64 9.0.21022
```

Ejecutamos Exchange Management Shell



Ejecutamos el comando **Get-ExchangeCertificate | fl services,Thumbprint**

```
[PS] C:\Windows\system32>Get-ExchangeCertificate | fl services,Thumbprint
```

```
Services      : IMAP, POP, UM, IIS, SMTP
Thumbprint    : C27364A364DEF05910C6AC7E3E064FD8032C0F11
```



# ITSanchez.com.ar

Compartiendo Experiencia  
Windows, Linux y mas...

Copiamos el Thumprint de nuestro certificado de Exchange

```
[PS] C:\Windows\system32>Get-ExchangeCertificate ifl services,Thumbprint  
  
Services      : IMAP, POP, UM, IIS, SMTP  
Thumbprint   : C27364A364DEF05910C6AC7E3E064FD8032C0F11
```

Ejecutamos el siguiente comando ->

```
Get-OwaVirtualDirectory | Set-OwaVirtualDirectory -InstantMessagingType OCS -  
InstantMessagingEnabled:$true -InstantMessagingCertificateThumbprint  
C27364A364DEF05910C6AC7E3E064FD8032C0F11 -InstantMessagingServerName  
lyfe01.itsanchez.local
```

```
[PS] C:\Windows\system32>Get-OwaVirtualDirectory | Set-OwaVirtualDirectory -Inst  
antMessagingType OCS -InstantMessagingEnabled:$true -InstantMessagingCertificate  
Thumbprint C27364A364DEF05910C6AC7E3E064FD8032C0F11 -InstantMessagingServerName  
lyfe01.itsanchez.local  
[PS] C:\Windows\system32>
```

Ejecutamos el comando -> iisreset

```
[PS] C:\Windows\system32>iisreset  
  
Attempting stop..  
Internet services successfully stopped  
Attempting start..  
Internet services successfully restarted  
[PS] C:\Windows\system32>
```



# ITSanchez.com.ar

Compartiendo Experiencia  
Windows, Linux y mas...

Desde el Frontend de Lync, ejecutamos Lync Server Management Shell



Lync Server Management Shell



Ejecutamos → **Get-CsSite**

anotamos el SiteID (1) en mi caso

```
PS C:\Users\administrator.ITSANCHEZ> Get-CsSite

Identity       : Site:ITSanchez
SiteId         : 1
Services       : <UserServer:lyfe01.itsanchez.local, Registrar:lyfe01.itsanchez.local, UserDatabase:lyfe01.itsanchez.local, FileStore:lyfe01.itsanchez.local...>
Pools          : <lyfe01.itsanchez.local, 192.168.50.220, lyed01.itsanchez.local>
FederationRoute :
Description    : Lync Server 2010
DisplayName    : ITSanchez
SiteType       : CentralSite
ParentSite     :

PS C:\Users\administrator.ITSANCHEZ> _
```





# ITSanchez.com.ar

Compartiendo Experiencia  
Windows, Linux y mas...

Ejecutamos el comando ->

```
New-CsTrustedApplicationPool -Identity owa.itsanchez.com.ar -Registrar  
lyfe01.itsanchez.local -Site 1 -RequiresReplication $false
```

```
PS C:\Users\administrator.ITSANCHEZ> New-CsTrustedApplicationPool -Identity owa  
itsanchez.com.ar -Registrar lyfe01.itsanchez.local -Site 1 -RequiresReplication  
$false
```

```
WARNING: Machine owa.itsanchez.com.ar from the topology you are publishing was  
not found in Active Directory and will result in errors during  
Enable-CsTopology as it tries to prepare Active Directory entries for the  
topology machines. If you choose to publish this topology Enable-CsTopology  
will have to be re-run once the missing machines are domain-joined.
```

#### Missing Machine

```
The following machines from the topology you are publishing were not found in  
Active Directory and will result in errors during Enable-CsTopology as it tries  
to prepare Active Directory entries for the topology machines. If you choose  
to publish this topology Enable-CsTopology will have to be re-run once the  
missing machines are domain-joined:
```

```
owa.itsanchez.com.ar
```

```
[Y] Yes [A] Yes to All [N] No [L] No to All [S] Suspend [?] Help
```

```
<default is "Y">:
```

Seleccionamos -> [Y] yes



# ITSanchez.com.ar

Compartiendo Experiencia  
Windows, Linux y mas...

Ejecutamos el comando ->

New-CsTrustedApplication -ApplicationID ExchangeOutlookWebApp -  
TrustedApplicationPoolFqdn owa.itsanchez.com.ar Port 9999

```
PS C:\Users\administrator.ITSANCHEZ> New-CsTrustedApplication -ApplicationID ExchangeOutlookWebApp -TrustedApplicationPoolFqdn owa.itsanchez.com.ar -Port 9999
WARNING: The following changes must be made in order for the operation to be complete.
Enable-CsTopology must still be run for all changes to take effect.

Identity                : owa.itsanchez.com.ar/urn:application:exchangeoutlookwebapp
ComputerGrupos          : {owa.itsanchez.com.ar sip:owa.itsanchez.com.ar@itsanchez.com.ar;gruu;opaque=srvr:exchangeoutlookwebapp:ZqGYWGlyqUe4tGCxg-1H9wAA}
ServiceGrupos           : sip:owa.itsanchez.com.ar@itsanchez.com.ar;gruu;opaque=srvr:exchangeoutlookwebapp:ZqGYWGlyqUe4tGCxg-1H9wAA
Protocol                : Mtls
ApplicationId           : urn:application:exchangeoutlookwebapp
TrustedApplicationPoolFqdn : owa.itsanchez.com.ar
Port                    : 9999
LegacyApplicationName   : exchangeoutlookwebapp

PS C:\Users\administrator.ITSANCHEZ> _
```

Confirmamos con y ejecutamos -> Enable-CsTopology

```
PS C:\Users\administrator.ITSANCHEZ> Enable-CsTopology
PS C:\Users\administrator.ITSANCHEZ> _
```



# ITSanchez.com.ar

Compartiendo Experiencia  
Windows, Linux y mas...

Validamos que nuestro Webmail tiene los contactos de Lync

Nuevo ▾ Eliminar ▾ Mover ▾ Filtro ▾ Ver ▾

Buscar en todo el buzón de correo

Conversaciones por Fecha ▾ Más reciente en la parte superior

LyncUser01 - Windows Internet Explorer

https://owa.itsanchez.com.ar/owa/?ae=Dialog&t=ChatWindow&cc=MTQuMi4yNDcuNS;

Participantes: ■ LyncUser01

Guillermo Sanchez 09:42 a.m.:  
▸ Como estas?

LyncUser01 09:42 a.m.:  
▸ Muy bien

Último mensaje recibido el jueves 10/05/2012 a las 09:42 a.m..

Lista de contactos

- Otros contactos
  - LyncUser01
  - LyncUser02

De esta forma tenemos nuestros contactos en OWA, espero les sea de utilidad  
Guillermo Sanchez [gsanchez@itsanchez.com.ar](mailto:gsanchez@itsanchez.com.ar)